

LIPOMA REMOVAL

Policy # 58

Implementation Date: 9/1/11

Revision Dates: 8/21/14, 2/6/17

Disclaimer:

1. Policies are subject to change without notice.
2. Policies outline coverage determinations for SelectHealth Commercial, SelectHealth Advantage (Medicare), and SelectHealth Community Care (Medicaid) plans. Refer to the “Policy” section for more information.

Description

A lipoma is a benign fatty tumor usually composed of mature fat cells, found in the dermis, epidermis, subcutaneous tissue, and rarely found below the fascia (i.e., subfascial and sub-muscular).

Coding selection should be based on the location and specific depth of the lipoma. Most of these lesions are below the skin (dermis) but above the fascia. If the provider does not specify the lesion was below the fascia, codes for these procedures should come from the Integumentary section of the CPT manual. If the documentation indicates the lesion was below the fascia, the code description will indicate a “soft tissue lesion” was removed and the CPT code will be found under the specific anatomic location.

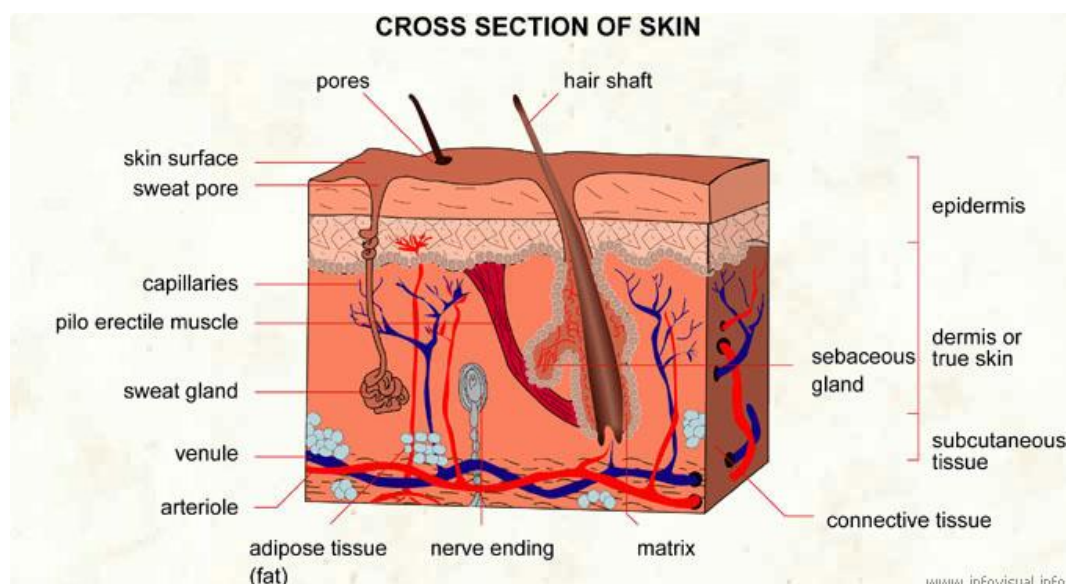
Commercial Plan Policy

Payment for the services detailed in this Reimbursement Policy are conditional upon meeting the coverage criteria outlined in SelectHealth’s Medical Policies.

SelectHealth **will cover the removal of lipomas when medically necessary when the provider has documented the lesion is causing a functional impairment.** Functional impairment is defined as pain of such magnitude or locations of the lesion that it impairs an individual’s ability to perform their ADLs, limits mobility, or otherwise prevents normal function of a body part. The documentation should indicate the specific location and size of the lesion along with the symptoms reported by the member. This documentation is especially important because people who tend to have lipomas have several in many locations. It is not unusual for a surgeon to remove dozens of lipomas during a surgical encounter and not all of them meet the criteria for medical necessity.

If functional impairment is not identified, the removal of a lipoma is not covered, based on the cosmetic exclusion in the certificate of coverage. If there is a question regarding the medical necessity for lipoma removal, a clinical review is required.

To select the proper CPT code for the removal of a lipoma, it is necessary to understand the different layers of skin.



- If the lipoma is present in the epidermis or dermis (true skin), it would be appropriate to use an excision code from the integumentary system identified below:

CPT	Description (Integumentary System)
11400	Excision, benign lesion including margins, except skin tag (unless listed elsewhere), trunk, arms or legs; excised diameter 0.5 cm or less
11401	; excised diameter 0.6 to 1.0 cm
11402	; excised diameter 1.1 to 2.0 cm
11403	; excised diameter 2.1 to 3.0 cm
11404	; excised diameter 3.1 to 4.0 cm
11406	; excised diameter over 4.0 cm
11420	Excision, benign lesion including margins, except skin tag (unless listed elsewhere), scalp, neck, hands, feet, genitalia; excised diameter 0.5 cm or less
11421	; excised diameter 0.6 to 1.0 cm
11422	; excised diameter 1.1 to 2.0 cm
11423	; excised diameter 2.1 to 3.0 cm
11424	; excised diameter 3.1 to 4.0 cm
11426	; excised diameter over 4.0 cm
11440	Excision, other benign lesion including margins, except skin tag (unless listed elsewhere), face, ears, eyelids, nose, lips, mucous membrane; excised diameter 0.5 cm or less
11441	; excised diameter 0.6 to 1.0 cm
11442	; excised diameter 1.1 to 2.0 cm
11443	; excised diameter 2.1 to 3.0 cm
11444	; excised diameter 3.1 to 4.0 cm
11446	; excised diameter over 4.0 cm

- If the lipoma is in the subcutaneous tissue below the dermis and epidermis, it would be appropriate to use one of the following codes:

CPT	Description (Musculoskeletal System - Subcutaneous)
21011	Excision, tumor, soft tissue of face or scalp, subcutaneous; less than 2 cm
21012	; 2 cm or greater
21552	Excision, tumor, soft tissue of neck or anterior thorax, subcutaneous; 3 cm or greater
21555	; less than 3 cm
21930	Excision, tumor, soft tissue of back or flank, subcutaneous; less than 3 cm
21931	; 3 cm or greater
22902	Excision, tumor, soft tissue of abdominal wall, subcutaneous; less than 3 cm
22903	; 3 cm or greater
23071	Excision, tumor, soft tissue of shoulder area, subcutaneous; 3 cm or greater
23075	; less than 3 cm
24071	Excision, tumor, soft tissue of upper arm or elbow area, subcutaneous; 3 cm or greater
24075	; less than 3 cm
25071	Excision, tumor, soft tissue of forearm and/or wrist area, subcutaneous; 3 cm or greater
25075	; less than 3 cm
26111	Excision, tumor or vascular malformation, soft tissue of hand or finger, subcutaneous; 1.5 cm or greater
26115	; less than 1.5 cm
27043	Excision, tumor, soft tissue of pelvis and hip area, subcutaneous; 3 cm or greater
27047	; less than 3 cm
27327	Excision, tumor, soft tissue of thigh or knee area, subcutaneous; less than 3 cm
27337	; 3 cm or greater
27618	Excision, tumor, soft tissue of leg or ankle area, subcutaneous; less than 3 cm
27632	; 3 cm or greater
28039	Excision, tumor, soft tissue of foot or toe, subcutaneous; 1.5 cm or greater
28043	; less than 1.5 cm

- If a lipoma is below the epidermis, dermis, and subcutaneous layers of skin (i.e., in a subfascial or a sub-muscular tissue), an appropriate code from the following list would be appropriate:

CPT	Description (Musculoskeletal System – Subfascial/Submuscular)
21013	Excision, tumor, soft tissue of face and scalp, subfascial (eg, sub-galeal, intramuscular); less than 2 cm
21014	; 2 cm or greater

21554	Excision, tumor, soft tissue of neck or anterior thorax, subfascial (eg, intramuscular); 5 cm or greater
21556	; less than 5 cm
21932	Excision, tumor, soft tissue of back or flank, subfascial (eg, intramuscular); less than 5 cm
21933	; 5 cm or greater
22900	Excision, tumor, soft tissue of abdominal wall, subfascial (eg, intramuscular); less than 5 cm
22901	; 5 cm or greater
23073	Excision, tumor, soft tissue of shoulder area, subfascial (eg, intramuscular); 5 cm or greater
23076	; less than 5 cm
24073	Excision, tumor, soft tissue of upper arm or elbow area, subfascial (eg, intramuscular); 5 cm or greater
24076	; less than 5 cm
25073	Excision, tumor, soft tissue of forearm and/or wrist area, subfascial (eg, intramuscular); 3 cm or greater
25076	; less than 3 cm
26113	Excision, tumor, soft tissue, or vascular malformation, of hand or finger, subfascial (eg, intramuscular); 1.5 cm or greater
26116	; less than 1.5 cm
27045	Excision, tumor, soft tissue of pelvis and hip area, subfascial (eg, intramuscular); 5 cm or greater
27048	; less than 5 cm
27328	Excision, tumor, soft tissue of thigh or knee area, subfascial (eg, intramuscular); less than 5 cm
27339	; 5 cm or greater
27619	Excision, tumor, soft tissue of leg or ankle area, subfascial (eg, intramuscular); less than 5 cm
27634	; 5 cm or greater
28041	Excision, tumor, soft tissue of foot or toe, subfascial (eg, intramuscular); 1.5 cm or greater
28045	; less than 1.5 cm

It should be noted at this time, that the above-listed code (i.e., subfascial/submuscular) would usually be done in an outpatient or hospital location as there is usually general anesthesia required.

Upon review and/or post-payment review, SelectHealth will request return of any overpayment as appropriate.

SelectHealth Advantage (Medicare/CMS)

SelectHealth Advantage **will follow the commercial plan policy.**

SelectHealth Community Care (Medicaid)

SelectHealth Community Care **will follow the commercial plan policy.**

Applicable Codes

CPT (identified above), HCPCS, ICD-9-CM

Sources

1. *Current Procedural Terminology (CPT®)*, (2014) – American Medical Association
2. ICD-9-CM Coding Guidelines. (2013, January 1). Retrieved July 8, 2014, from https://www.encoderpro.com/epro/physicianDoc/pdf/i9v1/i9_guidelines.pdf
3. *Reporting of Cutaneous Excision Pending Pathology*, CPT® Assistant May 2012 p.13.
4. *Surgery: Integumentary/ Musculoskeletal System*, CPT® Assistant January 2010 pp. 3-5
5. *Excision of Subcutaneous Soft Tissue Tumors*, CPT® Assistant August 2006 pp. 12-14
6. *Cross Section of Skin* – (2011) The Visual Dictionary http://www.infovisual.info/03/036_en.html- applies

Disclaimer

This document is for informational purposes only and should not be relied on in the diagnosis and care of individual patients. Medical and Coding/Reimbursement policies do not constitute medical advice, plan preauthorization, certification, an explanation of benefits, or a contract. Members should consult with appropriate healthcare providers to obtain needed medical advice, care, and treatment. Benefits and eligibility are determined before medical guidelines and payment guidelines are applied. Benefits are determined by the member's individual benefit plan that is in effect at the time services are rendered.

The codes for treatments and procedures applicable to this policy are included for informational purposes. Inclusion or exclusion of a procedure, diagnosis or device code(s) does not constitute or imply member coverage or provider reimbursement policy. Please refer to the member's contract benefits in effect at the time of service to determine coverage or non-coverage of these services as it applies to an individual member.

SelectHealth makes no representations and accepts no liability with respect to the content of any external information cited or relied upon in this policy. SelectHealth updates its Coverage Policies regularly, and reserves the right to amend these policies without notice to healthcare providers or SelectHealth members. Claims will be reviewed based on current policy language at time of review.

Members may contact Customer Service at the phone number listed on their member ID Card to discuss their benefits more specifically. Providers with questions about this Coverage Policy may call SelectHealth Provider Relations at 801-442-3692.

No part of this publication may be reproduced, stored in a retrieval system or transmitted, in any form or by any means, electronic, mechanical, photocopying, or otherwise, without permission from SelectHealth.

“Intermountain Healthcare” and its accompanying logo, the marks of “SelectHealth” and its accompanying marks are protected and registered trademarks of the provider of this Service and or Intermountain Health Care, Inc., IHC Health Services, Inc., and SelectHealth, Inc.

Also, the content of this Service is proprietary and is protected by copyright. You may access the copyrighted content of this Service only for purposes set forth in these Conditions of Use.

© CPT Only – American Medical Association