



Select  
Health

# Kidney Health Evaluation (KED)

## 200% Accountability

Select Health | Fall 2023 Best Practice Conference  
September 27, 2023

Dr. Leslie P. Wong

Senior Medical Director of Intermountain Kidney Services and Nephrology  
Interim Senior Medical Director of Intermountain Medical Specialties

# Intermountain Kidney Clinics Success in the Quality Provider Program

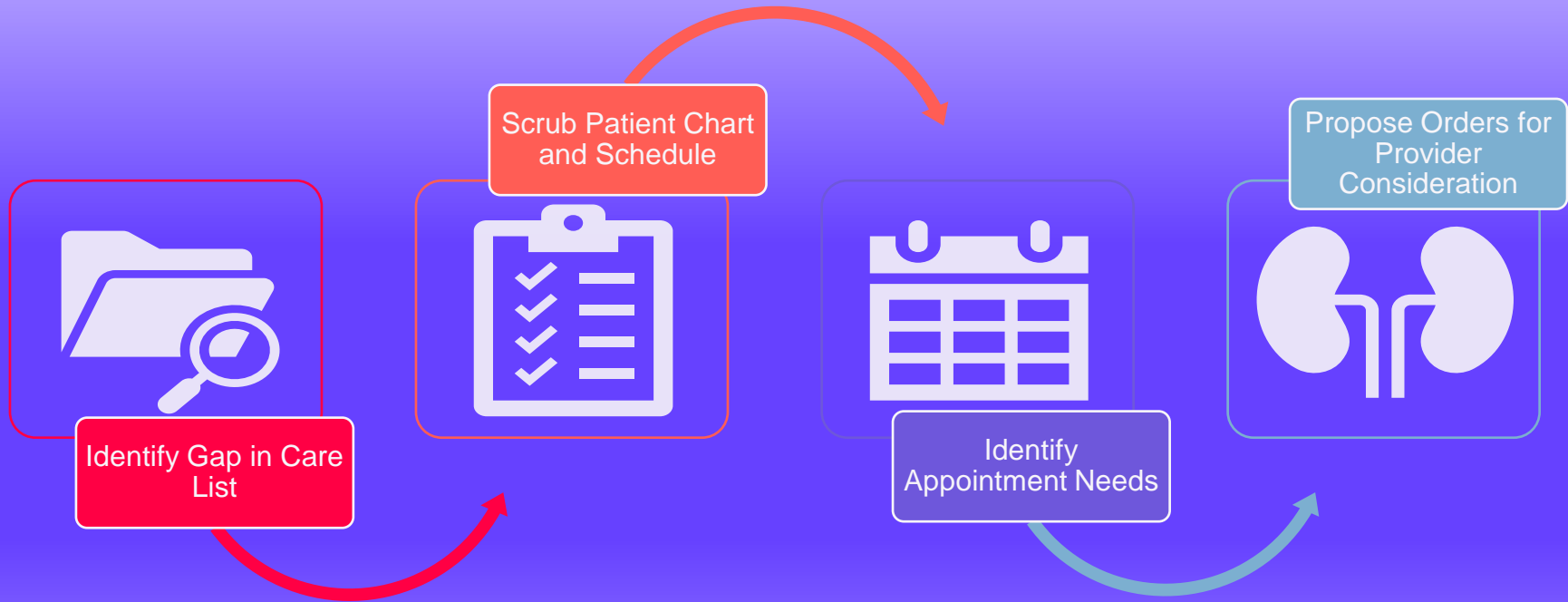
200% Accountability by All





# Intermountain Kidney Clinic

# Nurse Navigation Process



# Kidney Clinic Nurse Navigation Team

6

6 Nurse  
Navigators

Nurse  
Navigator Lead



Navigation  
Assistant



# Follow-Up Appointments





# Through the Lens of 200% Accountability

## Blood Pressure Measuring & Control

Members 18–75 years of age with diabetes (types 1 and 2) whose blood pressure (BP) was adequately controlled (<140/90 mm Hg) during the measurement year

## Diabetic Eye Exams

Members 18–75 years of age with diabetes (types 1 and 2) who had a retinal eye exam.

## Diabetic A1C Monitoring

Members 18–75 years of age with diabetes (types 1 and 2) whose hemoglobin A1c (HbA1c) was at the following levels during the measurement year:

- HbA1c control (<8.0%).
- HbA1c poor control (>9.0%)

## KED

Members 18–85 years of age with diabetes (type 1 and type 2) who received a kidney health evaluation, defined by an estimated glomerular filtration rate (eGFR) **and** a urine albumin-creatinine ratio (uACR), during the measurement year



# The Benefits of KED Bundled Labs

KED Bundled Labs = “Kidney Risk Score”

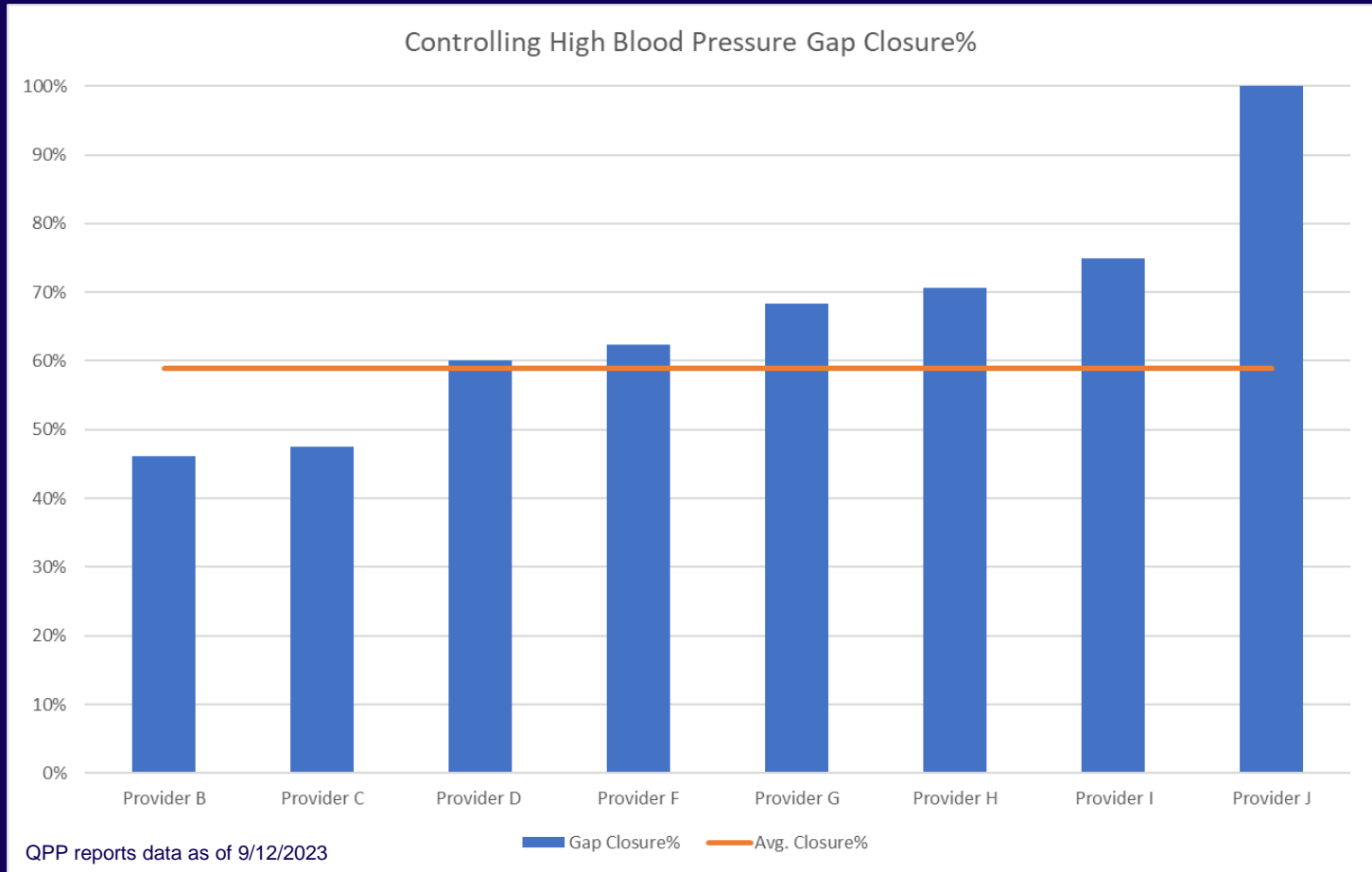
EGFR and an ACR will be performed at the same time.



Order generates a calculation of the patient's risk of progressing to kidney failure using the 4-variable Kidney Failure Risk Equation (KFRE) calculation.



# Intermountain Kidney Clinic- Provider Gap Closure





Select  
Health

# Implementing CPT Category II Codes

Select Health | Fall 2023 Best Practice Conference  
September 27, 2023

Debra Bowen, CPC  
Projects Supervisor &  
Assistant General Manager



Jordan Meadows &  
Hunter **Medical Centers**

- From the [jordanmeadows.com](https://www.jordanmeadows.com)  
website

# What are CPT Category II Codes?

**According to the AMA:<sup>1</sup>**



- Supplemental tracking codes used for performance measurement
- Codes that facilitate data collection and reporting
- Not a substitute for Category I codes

# Why did we decide to implement CPT Category II codes?

1. We needed a way to comply with increasing reporting requirements without adding staff.
2. It saves time by reducing the need to scrub lists and enter manual corrections.
3. It makes it easier to track the delivery of quality care.
4. Some payers pay bonuses for category II code utilization.

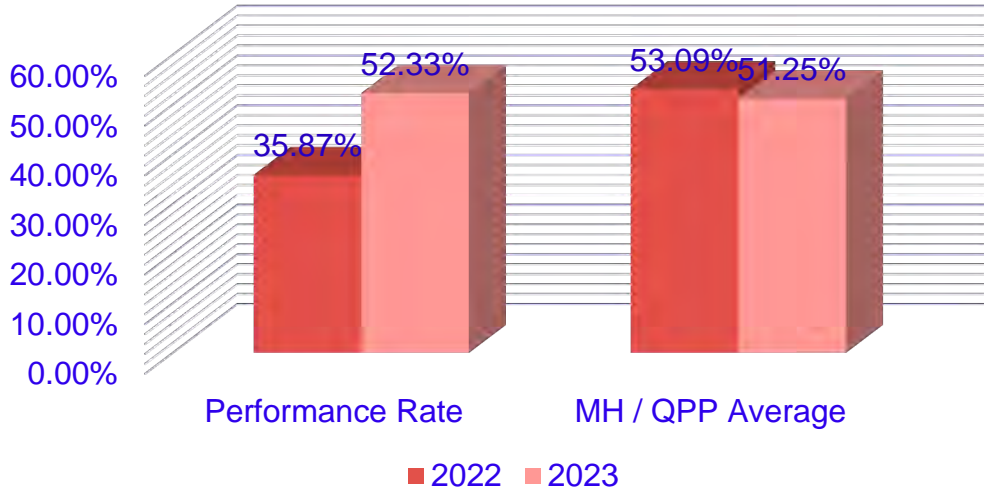
# Where did we focus?

## AMA CPT Category II codes we are using:

- **A1c Codes:**
  - 3044F - <7%
  - 3051F -  $\geq 7.0\%$  - <8.0%
  - 3052F -  $\geq 8.0\%$  - <9.0%
  - 3046F - >9.0%
- **Blood Pressure Codes:**
  - 3074F – Systolic <130
  - 3075F – Systolic 130 – 139
  - 3077F – Systolic  $\geq 140$
  - 3078F – Diastolic <80
  - 3079F – Diastolic 80 – 89
  - 3080F – Diastolic  $\geq 90$
- **Discharge Medication Reconciliation: 1111F**

# What results have we seen?

## July 22-23 A1c Performance Comparison



### 2023:

- No A1c corrections to date
- Rate improved & above QPP average

2022: 67 A1c corrections scrubbed & entered



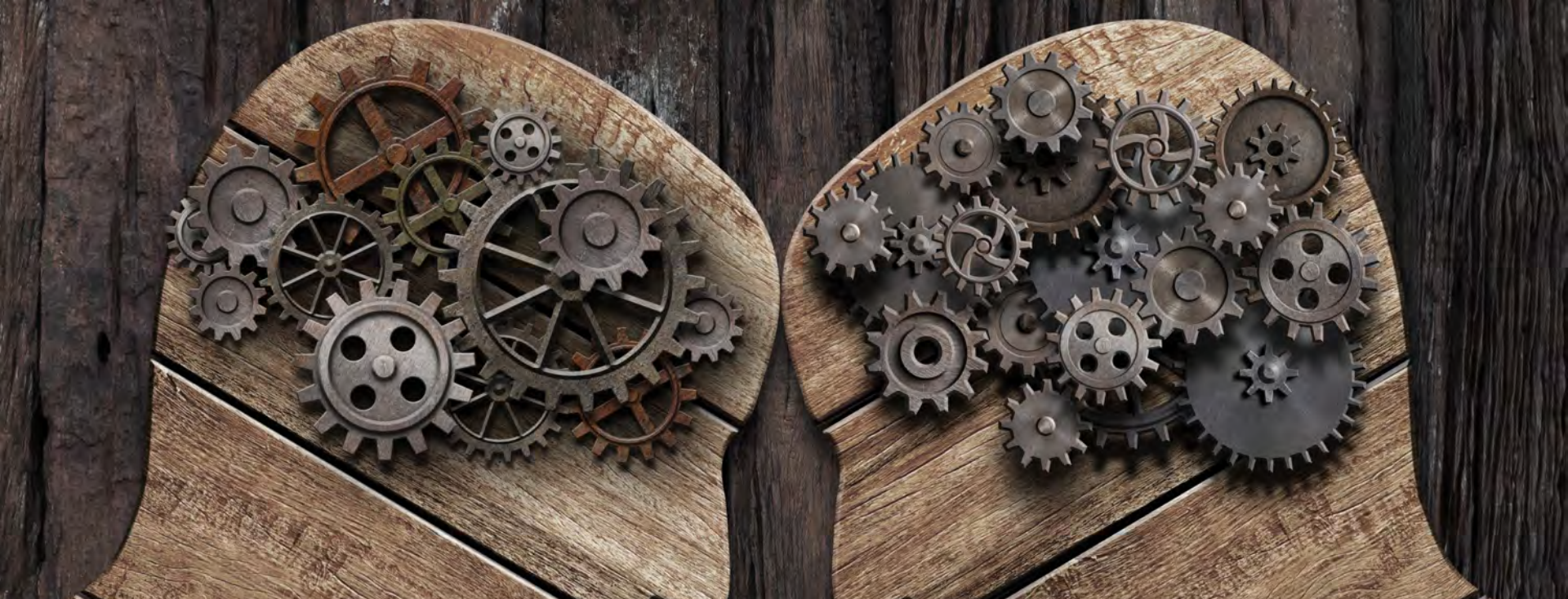
# CPT Category II Coding

## Pros:

1. Smaller lists to scrub and fewer corrections to enter (time savings!)
2. Value-added efficiency by posting to insurance faster
3. Improved tracking of care delivery for better patient outcomes
4. More reliable than data submission

## Cons:

1. Added time in coding the visit
2. Waiting for lab results before coding & billing



It is more cost effective to code and bill CPT Category II codes than to scrub for and submit corrections.

# Reference

1. American Medical Association. *Criteria for CPT® Category II codes*. ama.org. <https://www.ama-assn.org/practice-management/cpt/criteria-cpt-category-ii-codes>. No publication date. Accessed September 6, 2023.



# QPP Updates

Sharon Thomas, BSN, RN

Wendy Salas, BSN, RN



# 2024 Program Updates

---

## Breast Cancer Screening

Add: Ages 40-50 years  
(reporting only)



## Medication Adherence

Change: Quarterly payments



## Depression Screening (new moms)

New: Quality Provider Plus program participants



# Thank you!

