



Immunizations

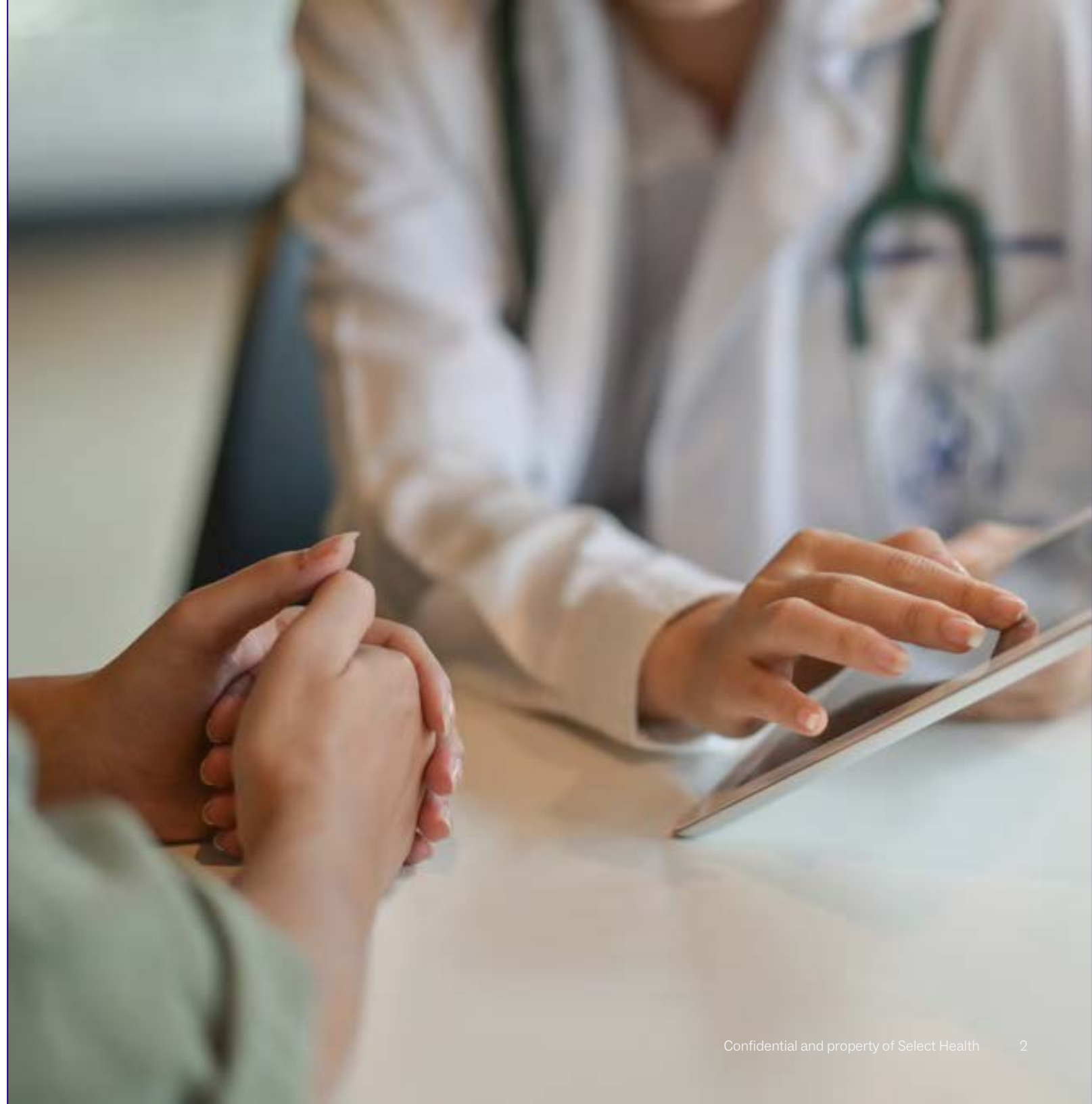
***Quality Provider Program
Gather & Grow Conference
October 29, 2024***

***Shannon Seymour BSN, RN
Select Health Quality Consultant II***

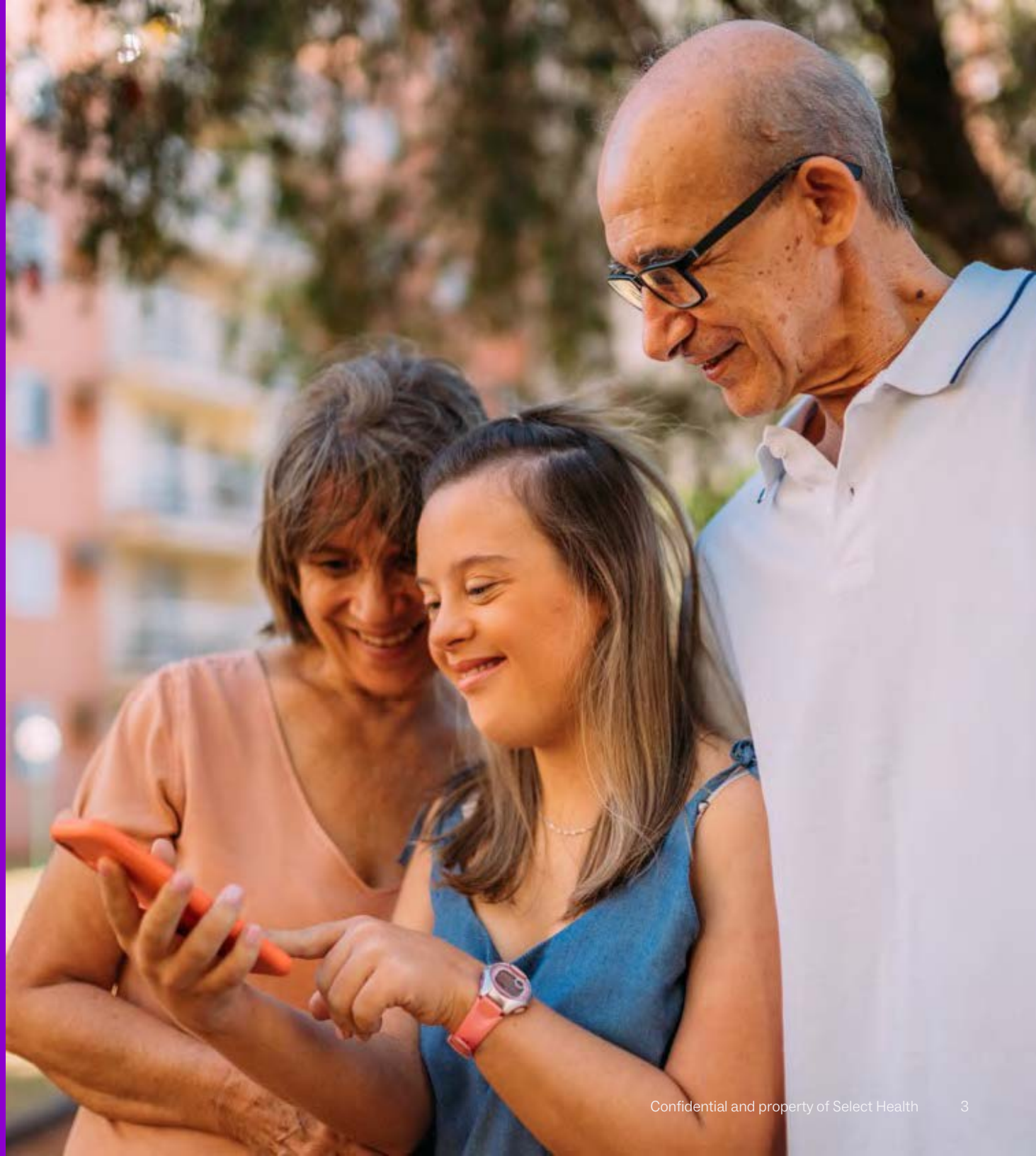


Immunizations Overview

- Vaccine Updates
 - Adult
 - Maternal
 - Adolescent
 - Child
- Rates, Outreach, and Best Practices
- Corrections
- Additional Resources



Adult Vaccine Update



Adult Vaccine Update

Influenza

- All formulations are now trivalent
- High dose now 0.5ml dose

RSV

- Recommended for all adults 75 and older
- Recommended for age 60–74 if at high risk
- One time dose

COVID

- Updated for currently circulating strains
- Recommended for everyone 6 months and older

Please refer to standing orders for more details.



For Intermountain Clinics/Medical Group

The screenshot shows the Intermountain Health MyIntermountain website. At the top left is the Intermountain Health logo. To its right is the text "MyIntermountain". Further right are four buttons: "My Tools", "My Saved Pages", "Find People", and "ServiceHub". Below this is a navigation bar with links for "Work Resources", "Clinical Resources", "Life & Benefits", "Career & Learning", "Locations & Departments", and "Who We Are". A search bar labeled "Search MyIntermountain" is on the right. The main content area has a blue header with the breadcrumb "MyIntermountain > Clinical Resources > Immunization" and the title "Immunization". Below the header, there are three main sections: "Important phone numbers" with a list of two phone numbers, "Immunization Policies" with a descriptive paragraph and a "Print" button, and "Immunization Playbook" with a button. A decorative image of a network graph is positioned between the phone numbers and the policies section.

Important phone numbers

- Utah Dept. of Health Immunization Hotline - 1-800-275-0659
- Utah Dept. of Health Immunization Program Manager - 801-538-6905

Immunization Policies

This site provides access to all immunization related policies, procedures, guidelines, standing orders, tools and links. Content for the "Immunization Policies, Procedures, Immunization Standing Orders and Tools" binder can be printed from this site and will be kept updated.

Immunization Playbook

Image: <https://intermountainhealth.sharepoint.com/sites/immunization>

- ✓ Vaccine Standing Orders
- ✓ Influenza Resources
- ✓ COVID-19 Vaccine Standing Orders and Resources
- ✓ Respiratory Syncytial Virus (RSV) Vaccines
- ✓ Immunization Policies, Procedures, and Guidelines
- ✓ Mpox Vaccine Standing Order and Resources
- ✓ Administering Vaccines
- ✓ Schedules and Recommendations (right vaccine, right time)
- ✓ Storage and Handling
- ✓ Safety
- ✓ USIIS

Scroll down to “Vaccine Standing Orders” to access the information you need.

^ Vaccine Standing Orders

- [Changes to 2024-2025 Vaccine Standing Orders](#)
- [Changes to 2024-2025 Respiratory Vaccine Standing Orders](#)

Standing Orders

- [COVID Vaccine 2024-2025 Formula \(Moderna, SPIKEVAX\)](#)
- [COVID Vaccine 2024-2025 Formula \(Pfizer, COMIRNATY\)](#)
- [DTaP Vaccines \(INFANRIX, DAPTACEL\)](#)
- [DTaP / Hep B / Polio Combination Vaccine \(PEDIARIX\)](#)
- [DTaP / Polio Combination Vaccines \(KINRIX, Quadracel\)](#)

Image: <https://intermountainhealth.sharepoint.com/sites/immunization>

For Affiliate Providers¹

The graphic is a three-panel informational poster. The top panel is a dark blue banner with a white shield icon containing a syringe and the text 'Fall and Winter Immunization Guide'. The middle panel is divided into three vertical sections. The left section is light blue and contains the text 'COVID-19 and Flu Updated 2024-25 Vaccines' and 'Everyone 6 months and older'. The middle section is white with a blue rounded rectangle containing 'Vaccine Pregnant parents during weeks 32-36 of pregnancy during RSV season' and 'OR Monoclonal Antibodies Babies entering or born during the RSV season'. The right section is light blue and contains 'RSV Vaccine for Older Adults (currently, older adults only need to get the RSV vaccine once; not annually)', 'People ages 60 and over at high risk of severe RSV', 'AND', and 'Everyone ages 75 and older'. The bottom panel features illustrations of diverse people: a group of seven people including a person in a wheelchair, a pregnant woman, and a woman holding a baby. A dark blue bar at the bottom left contains the URL 'cdc.gov/respiratory-viruses/prevention/immunizations.html'. The CDC logo is in the bottom right corner.

Fall and Winter Immunization Guide

COVID-19 and Flu Updated 2024-25 Vaccines

Everyone 6 months and older

RSV Immunization to Protect Babies

Vaccine
Pregnant parents during weeks 32-36 of pregnancy during RSV season

OR

Monoclonal Antibodies
Babies entering or born during the RSV season

RSV Vaccine for Older Adults
(currently, older adults only need to get the RSV vaccine once; not annually)

People ages 60 and over at high risk of severe RSV

AND

Everyone ages 75 and older

cdc.gov/respiratory-viruses/prevention/immunizations.html

Maternal Vaccine Update



Maternal RSV Protection

Only **ABRYSVO**[®] is approved for use in pregnant patients in gestational weeks 32 and 0 days to 36 and 6 days to provide passive immunity to infants.

Infant RSV protection

If mother was **not** vaccinated with **ABRYSVO**[®], infant can receive:

- Long-acting anti-preF fusion protein monoclonal antibodies
- **Nirsevimab** (Beyfortus[®] Astra Zeneca/Sanofi)

Please refer to standing orders for more details.

CDC Guidance on Immunizations to Protect Infants: RSV²

Comparison of Immunizations		
	Maternal Vaccine (Pfizer's Abrysvo)	Nirsevimab
Who is it recommended for?	People who are 32 through 36 weeks pregnant	Babies born to mothers who did not get a maternal RSV vaccine and, also, a small group of young children (ages 8-19 months) at increased risk of severe RSV
How does it work?	Mom passes protection (antibodies) to baby during pregnancy	Baby receives protection (antibodies) directly
When is it recommended in most of continental U.S.?	September – January	October – March
Who does it protect from severe RSV?	Baby	Baby
How long does protection last?	Approximately 6 months after birth	At least 5 months after immunization

Who should not get it?	People with a history of severe allergic reaction to any component of the vaccine	Children with a serious allergic reaction to any component of nirsevimab OR Babies who are already protected because their mother received a maternal vaccine during pregnancy
Possible side effects	Common side effects: headache, nausea, pain at injection site, and more. Possible risks under further study: preterm birth, pre-eclampsia (a dangerous high blood pressure condition)	Side effects are usually mild and end quickly. Hypersensitivity reactions are uncommon but have been reported.
Report adverse events to:	VAERS or call 1-800-822-7967	FDA's Medwatch or call 1-800-FDA-1088

Adolescent Vaccine Update



Access American Cancer Society HPV vaccine resources³

Don't Wait to Vaccinate



DID YOU KNOW...

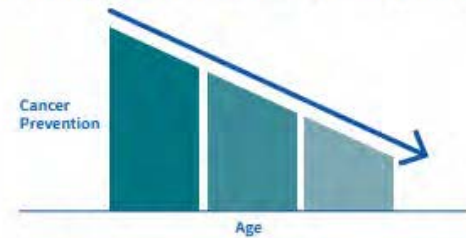
The American Cancer Society recommends that boys and girls get vaccinated against HPV between the ages of **9 and 12** to help prevent six types of cancer later in life.



Age Matters

When you vaccinate your child on time, you help protect them from HPV cancers. HPV vaccination works best when given before age 13. **Vaccination at the recommended ages will prevent more cancers than vaccination at older ages.**

Cancer Prevention Decreases as Age at Vaccination Increases



On Time
Ages 9-12
2 Doses
6-12 months apart

Late
Ages 13-14
2 Doses
6-12 months apart

Late - Extra Dose
Ages 15-26
3 Doses
1st dose at visit one
2nd dose 1-2 months later
3rd dose 6 months after 1st dose

This tool was supported in part by Centers for Disease Control and Prevention Cooperative Agreement Number NH23IP000953-03.

Know the Facts!

There are many benefits to initiating the HPV vaccine series at age 9. These include:

1 Offers more time for completion of the series by the age of 13

2 Results in a strong immune response to the HPV vaccine

3 Increases the likelihood of vaccinating prior to first HPV exposure

4 Decreases questions about sexual activity by parents and guardians

5 Decreases requests for only vaccines that are "required" for school

6 Decreases the number of administered shots per visit

7 Increases vaccinations and therefore the number of cancers prevented

8 Has been shown by several systems to increase vaccination rates

9 Has been shown to be highly acceptable to systems, providers, and parents

The HPV vaccine has been given for more than 15 years and provides long-lasting protection. The HPV vaccine is safe and effective, with no long-term side effects. In fact, 109 studies conducted among 2.5 million people in 6 countries have shown that there have been no serious side effects other than what is typical for all vaccines (i.e., allergic reactions, fainting).²

For more information, tools and resources, visit [HPV Vaccination Starts at Age 9 - National HPV Roundtable](#).

Footnotes:

1. HPV Cancers are Preventable. Centers for Disease Control and Prevention. Updated November 1, 2021. Retrieved August 2, 2022, from <https://www.cdc.gov/cancer/hpv/prevention/index.html>

2. Phillips A, Patel C, Phillips A, Brotherton J, Macartney K. Safety of Human Papillomavirus Vaccines: An Updated Review. Drug Saf. 2018;41(4):329-346. doi:10.1007/s40264-017-0625-z

Childhood Vaccine Update



Childhood Vaccine Update⁴

Children who are contraindicated for the pertussis component of the DTaP vaccine may receive Td vaccine for subsequent doses.

The only contraindication specific to the pertussis component of the DTaP vaccine is encephalopathy within 7 days of the vaccination, not attributed to another cause.

* Advisory Committee on Immunization Practices (ACIP). Under the auspices of CDC, ACIP develops recommendations on how to use vaccines and passive immunizations to control diseases in the US.



Importance of the 18-month Visit

All well-child visits are important, but data shows that the 18-month visit is the most impactful in determining if a child is complete with the recommended vaccine schedule by the 2nd birthday.

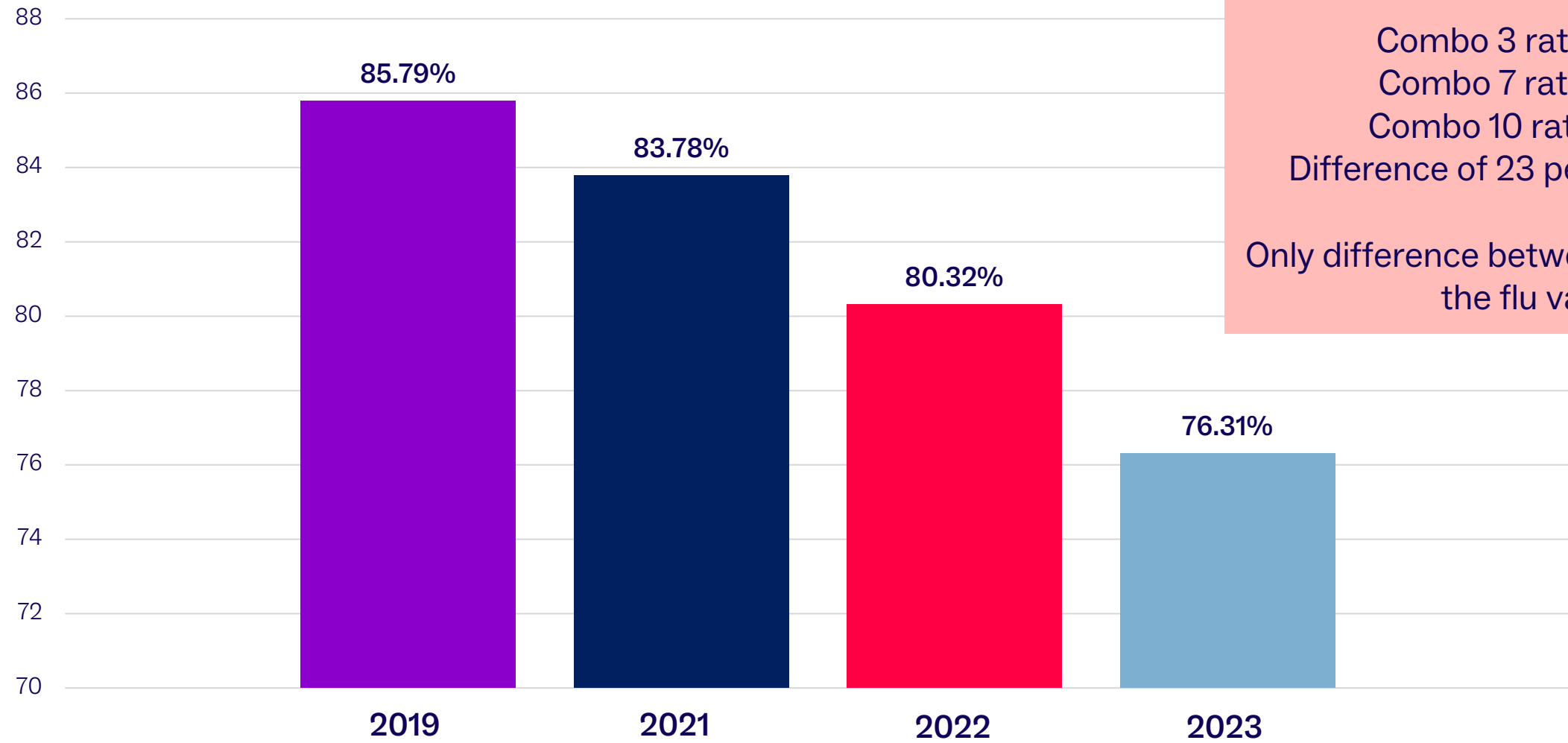


Rates, Outreach, and Best Practices



COVID Pandemic Impact on Childhood Vaccination Rates

CIS COMBO 3



**Select Health Annual HEDIS Audit:
Measurement Year (MY) 2023**

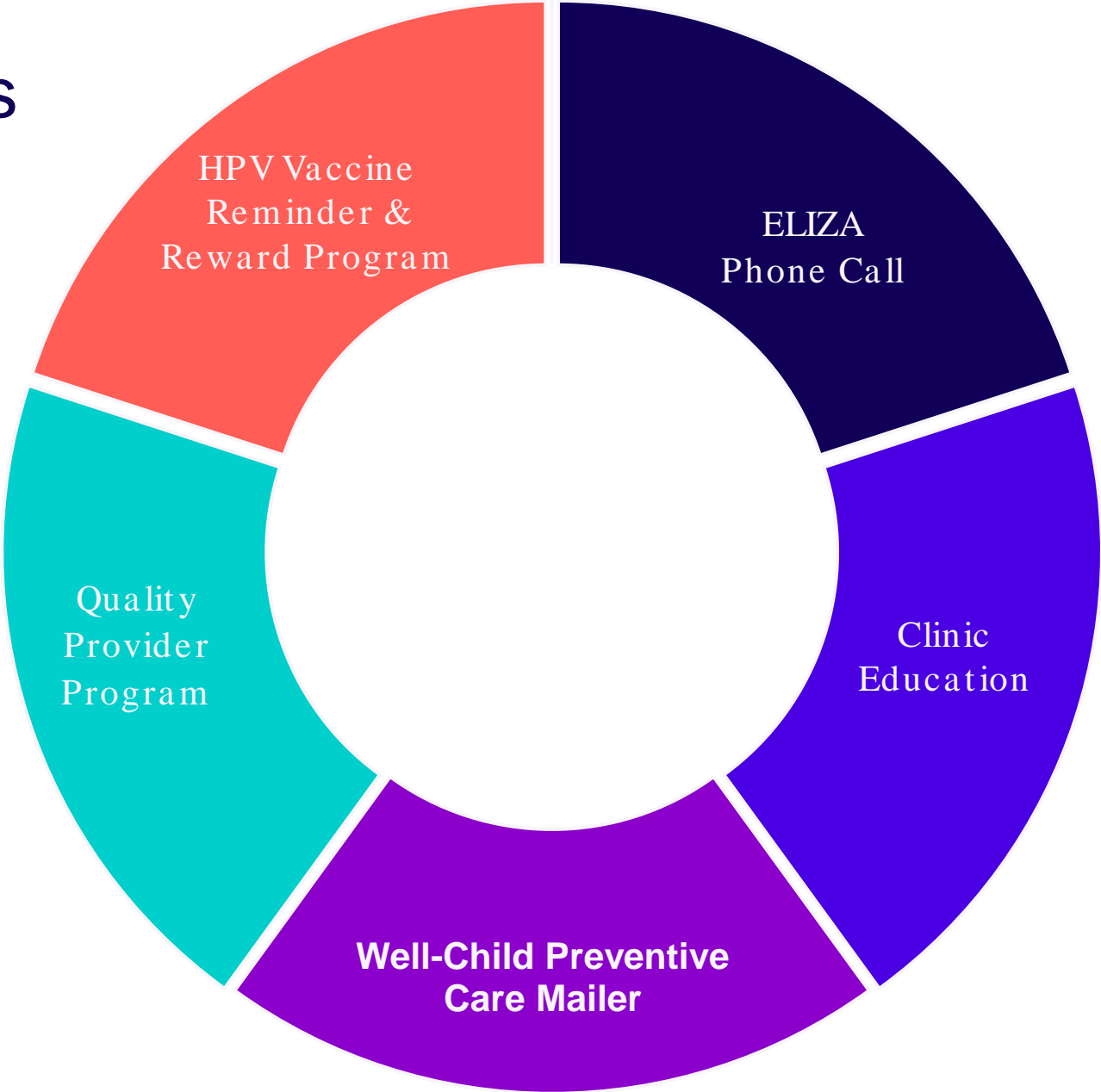
Combo 3 rate = 76.31%
Combo 7 rate = 71.32%
Combo 10 rate = 48.13%
Difference of 23 percentage points

Only difference between combo 7 & 10 is the flu vaccine.

Use Graphics from CDC National Immunization Awareness Month.⁵



How Select Health Promotes Child and Adolescent Vaccines



Visit the Select Health Well-Child Visits Page for Resources⁶

Well-Child Visits And Immunizations.
 Kids grow up fast. Regular checkups and immunizations are covered 100% on most plans, helping them stay healthy and avoid serious illness.

What Is A Well-Child Visit, And Why Does It Matter?
 Well-child visits are essential visits with a doctor to ask questions and get answers about your child's health. Here's what you can expect at a well-child visit:

- A physical exam and health screening
- Immunizations and booster shots as needed
- Evaluation of your child's growth and behavior development
- Discussion of your child's nutrition and fitness needs
- Treatment for any illnesses or injuries
- A referral to additional health specialists, if needed

2 ILLNESS PREVENTION
 At each well-child visit, your child's doctor will recommend immunizations and answer questions about how to prevent illness.

Recommended Immunizations
 Immunizations—also known as vaccines—protect children and those around them from serious diseases. Immunizations are usually covered at no cost and are given during your child's wellness visits as they age. Learn about immunizations at the [American Academy of Pediatrics](#). [Learn More](#) or visit the [Centers for Disease Control and Prevention \(CDC\)](#).

Babies and Children (Age 0 - 24 months)
 Toddlers, Teens, and Young Adults (Ages 2 - 21 years old)

Immunization schedule
 Immunizations are recommended at certain ages when your baby is most vulnerable, and can be given during your child's wellness exams. Please talk with your doctor if you have any questions.

0 NEWBORN	Hepatitis B	Date: _____
2 TWO MONTHS	Hepatitis B DTaP (Diphtheria, Tetanus, acellular Pertussis) Hib (Haemophilus influenzae type b) Polio Pneumococcal Rotavirus*	Date: _____
4 FOUR MONTHS	DTaP (Diphtheria, Tetanus, acellular Pertussis) Hib (Haemophilus influenzae type b) Polio Pneumococcal Rotavirus*	Date: _____
6 SIX MONTHS	Hepatitis B DTaP (Diphtheria, Tetanus, acellular Pertussis) Hib (Haemophilus influenzae type b) Polio Pneumococcal Rotavirus*	Date: _____
6+ SIX AND OLDER MONTHS	Influenza COVID-19	Date: _____
12 to 15 TWELVE TO FIFTEEN MONTHS	DTaP (Diphtheria, Tetanus, acellular Pertussis) Hib (Haemophilus influenzae type b) MMR (Measles, Mumps, Rubella) Varicella** (chicken pox) Pneumococcal Hepatitis A	Date: _____
18 EIGHTEEN MONTHS	Hepatitis A	Date: _____

Select Health

If you have an internet-enabled provider, you can keep track of your immunizations in MyHealth. Log on to [myhealth.selecthealth.com](#) or call the QLine.

*Some Select Health plans cover the rotavirus vaccine. Coverage is offered from either 2 or 4 doses. Coverage is not guaranteed for a certain amount depending on your plan and health.

** No varicella vaccine is needed if your child has already had chicken pox.



Immunization Best Practice: Case Study⁷

One of our community health clinics increased clinic CIS vaccine rates by **17 percentage points** from 2023–2024 by:

- Designating a Clinic Vaccine Champion
- Focusing on immunization messaging from the moment the patient walks in the door
- Providing materials in English and Spanish
- Holding monthly staff meetings with vaccine education
- Scheduling next appointments before patients leave
- Praising for success
- Using the reminder recall report from USIIS
- Creating an environment where all staff are on board



Corrections

1. Submit missing doses into USIIS first.
2. Check to see if doses are in USIIS, but still showing as missing.
3. Enter missing immunizations into the QDC Tool.



Best Practices for Entering Missing Immunizations in the QDC Tool

UTAH CLINICS

Intermountain Medical Group clinics should enter into iCentra
Affiliate clinics should enter into USIS

NEVADA CLINICS

Enter missing immunizations into WebIZ

IDAHO & COLORADO CLINICS

Enter data collection submissions directly into the QDC tool.
(Select Health does not receive data feeds from the state immunization records.)

REQUIRED DOCUMENTATION

Must include:
Patient name
DOB
Immunization date
Administration date

PREFERRED VACCINE RECORD

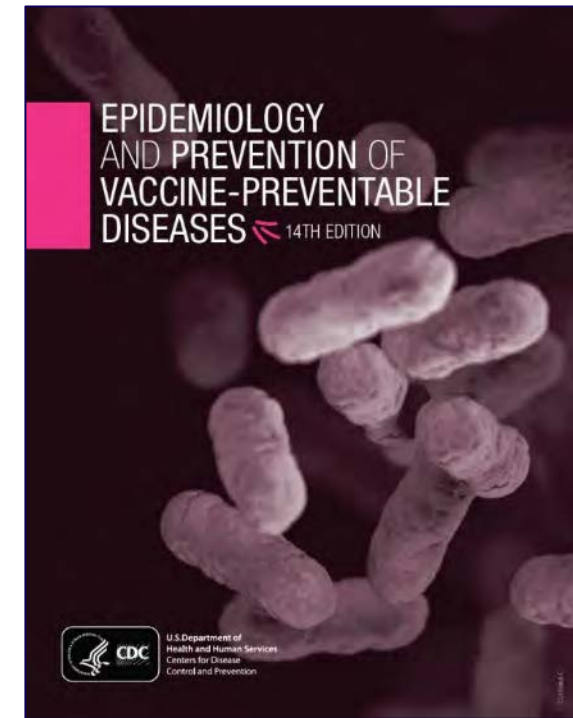
An official clinic or registry (e.g., USIS, WebIZ, IRIS, etc.) vaccine record (including the patient's entire vaccine history)

REMINDER: Please pull a **NEW** Select Health Quality Provider Gaps List before submitting corrections.

Additional Resources

For Providers:

- Centers for Disease Control and Prevention (CDC) Resources:
 - [Vaccines & Immunizations Website](#)
 - [Epidemiology and Prevention of Vaccine-Preventable Diseases, 14th Edition \(2021\)](#)
 - [“Wild-to-Mild” Social Media Toolkit](#)
- [Immunize.org](#)
- [Utah Department of Health and Human Services — Utah Immunization Program](#)



For Patients

- [Institute for Vaccine Safety — Let's Talk Shots Video Library \(23 animated videos\)](#)
- [Utah Department of Health & Human Services — Stay Up to Date](#)



Find Resources for Uninsured and Underinsured Adult Patients (Utah*)⁸

Eligibility	Available Utah VFA Vaccines**	Administration & Coding
<p>To receive vaccines from any Utah Department of Health Adult Initiatives, adults must be:</p> <ol style="list-style-type: none"> 19 years of age and older Uninsured (adult has no insurance)*** 	<ul style="list-style-type: none"> • Adacel (Tdap) • Havrix (Hepatitis A) • Hepelisav-B (Hepatitis B) • Gardasil (HPV) • Prevnar20 (Pneumo) • Shingrix (Shingles) • COVID-19 <ul style="list-style-type: none"> o Moderna o Novavax o Pfizer (Available for the 23-24 season only) 	<ol style="list-style-type: none"> Administration fees <ol style="list-style-type: none"> Facilities cannot bill for the cost of the vaccines. An administration fee can be charged up to \$20.72 (maximum fee) per vaccine. Facilities cannot deny patients or turn them away due to inability to pay. Coding <ol style="list-style-type: none"> UTOS for uninsured patients UT06 for underinsured patients

* Other state health departments may have similar programs.

** Subject to change.

*** In rare situations, eligibility can include those who are under-insured (i.e., health insurance that does not include vaccines or only covers specific vaccine types).

Utah VFA Program, Continued⁸

Participating Utah VFA Facilities

<ul style="list-style-type: none"> • 72nd Street CHC (COVID Only) • Bear River CHC-Tremonton (COVID Only) • Bear River HD-Logan • Brigham City CHC (COVID Only) • Central City CHC (COVID Only) • Central Utah HD-Delta • Central Utah HD-Fillmore • Central Utah HD-Junction Piute • Central Utah HD-Loa • Central Utah HD-Manti • Central Utah HD-Nephi • Central Utah HD-Richfield • Davis County HD-Clearfield • Ellis Shipp CHC (COVID Only) • Family Healthcare-Riverside (COVID Only) • Health West Brigham City (COVID Only) • Health West Garden City (COVID Only) • Health West North Logan (COVID Only) • Health West Providence (COVID Only) • Mid-Valley Health Clinic (COVID Only) 	<ul style="list-style-type: none"> • Midtown CHC-Davis • Midtown CHC-James Madison • Midtown CHC-Ogden • Midtown CHC-So Salt Lake • Mountainlands CHC-East Bay • Mountainlands CHC-Payson • Mountainlands CHC-Provo • Mountainlands CHC-West Park (COVID Only) • Neighborhood CHC (COVID Only) • Oquirrh View CHC (COVID Only) • Sacred Circle Healthcare (COVID Only) • Sacred Circle-West Valley (COVID Only) • Salt Lake County HD-Ellis R Shipp • Salt Lake County HD-Salt Lake • Salt Lake County HD-So Redwood • Salt Lake County HD-South Main • Salt Lake County HD-Southeast • Salt Lake County HD-Travel Clinic • Southwest HD-Beaver (COVID Only) • Southwest HD-Cedar City 	<ul style="list-style-type: none"> • Southwest HD-Kanab (COVID Only) • Southwest HD-Panguitch (COVID Only) • Southwest HD-St. George • Stephen D Ratcliffe CHC (COVID Only) • Summit County HD-Coalville • Summit County HD-Kamas • Summit County HD-Park City • Tooele County HD-Tooele • Tri County HD-Roosevelt • Tri County HD-Vernal • Uintah & Ouray Indian Health Center (COVID Only) • Urban Indian Center of SL (COVID Only) • Utah County HD-American Fork • Utah County HD-Payson • Utah County HD-Provo • Utah Dept of Corrections-Gunnison • Utah Dept of Corrections-SLC • Utah Partners for Health-W Jordan (COVID Only) • Wasatch County HD • Weber Morgan HD • WHHP 4th Street Clinic CHC
--	--	---

Utah Department of Health Adult Flu Initiative*

Available Adult Flu Vaccines**	Participating Adult Flu Facilities	
<ul style="list-style-type: none"> • Fluarix (2024-25) • Flucelvax (2024-25) 	<ul style="list-style-type: none"> • Bear River HD-Logan • Central Utah HD-Delta • Central Utah HD-Fillmore • Central Utah HD-Manti • Central Utah HD-Nephi • Central Utah HD-Richfield • Davis County HD-Clearfield • Midtown CHC-Davis • Midtown CHC-James Madison • Midtown CHC-Ogden • Midtown CHC-So Salt Lake • Salt Lake County HD-Ellis R Shipp • Salt Lake County HD-Salt Lake • Salt Lake County HD-So Redwood • Salt Lake County HD-South Main 	<ul style="list-style-type: none"> • Salt Lake County HD-Southeast • Salt Lake County HD-Travel Clinic • Summit County HD-Coalville • Summit County HD-Kamas • Summit County HD-Park City • Tri County HD-Roosevelt • Tri County HD-Vernal • Utah County HD-American Fork • Utah County HD-Payson • Utah County HD-Provo • Utah Dept of Corrections-Gunnison • Utah Dept of Corrections-SLC • Wasatch County HD • Weber Morgan HD • WHHP 4th Street Clinic CHC

* Information excerpted from Utah Department of Health & Human Services: Utah Vaccines for Adult (VFA), Adult Flu, Special Projects. *Adult Initiatives Immunization Program*. (presentation shared with Select Health). 2024. (**NOTE:** Other state health departments may have similar programs.)¹¹

** Subject to change with each flu season.

References

1. Centers for Disease Control and Prevention (CDC). National Center for Immunization and Respiratory Diseases. *Getting Your Immunizations for the 2024-2025 Fall and Winter Virus Season*. September 27, 2024. <https://www.cdc.gov/ncird/whats-new/getting-your-immunizations-for-the-2024-2025-fall-and-winter-virus-season.html>. Accessed October 10, 2024.
2. CDC. Respiratory Syncytial Virus Infection (RSV). *Immunizations to Protect Infants*. August 30, 2024. https://www.cdc.gov/rsv/vaccines/protect-infants.html?s_cid=SEM.MS:PAI:RG_AO_MS_TM_A18_RSV-Pregnancy-Brd:rsv%20vaccine%20and%20pregnancy:SEM00131&utm_id=SEM.MS:PAI:RG_AO_MS_TM_A18_RSV-Pregnancy-Brd:rsv%20vaccine%20and%20pregnancy:SEM00131. Accessed October 10, 2024.
3. Saslow D, Andrews KS, Manassaram-Baptiste D, Smith RA, Fontham ETH; American Cancer Society. Human papillomavirus vaccination 2020 guideline update: American Cancer Society guideline adaptation. *CA Cancer J Clin*. 2020;70:274-280.
4. CDC. Whooping Cough (Pertussis). *About Young Children with a Contraindication to Pertussis-Containing Vaccines*. June 26, 2024. <https://www.cdc.gov/pertussis/hcp/vaccine-recommendations/td-offlabel.html>. Accessed October 10, 2024.
5. CDC. Vaccines & Immunizations: Communication and Print Resources. CDC.gov website. <https://www.cdc.gov/vaccines/communication-resources.html>. Accessed October 10, 2024.
6. SelectHealth. Well-child visits and immunizations. selecthealth.org website. 2019. <https://selecthealth.org/wellness/preventive-care/well-child-visits>. Accessed October 2, 2024.
7. Wynette, C. Utah State Health Department. Informal communication. September 2024.
8. Utah Department of Health & Human Services: Utah Vaccines for Adult (VFA) Program. Utah.gov. 2024. <https://immunize.utah.gov/utah-vaccines-for-adults-program/>. Accessed October 1, 2024.