

2025



# Select Health Medicare Member Guide

Select Health Medicare + Kroger  
(HMO) 022



Select  
Health

# Welcome to Select Health Medicare.

This guide will help you understand your benefits and give you the tools and resources to stay healthy.

## Table of contents

SECTION 1 – WE ARE HERE TO HELP	3
SECTION 2 – YOUR DENTAL BENEFITS	4
SECTION 3 – YOUR VISION AND EYEWEAR BENEFITS	4
SECTION 4 – YOUR HEARING BENEFITS	5
SECTION 5 – FLEX CARD OVERVIEW	6
SECTION 6 – WELLNESS YOUR WAY + OVER-THE-COUNTER BENEFIT	8
SECTION 7 – HEALTHY LIVING REWARDS	10
SECTION 8 – KROGER GROCERY BENEFIT	12
SECTION 9 – CARE MANAGEMENT RESOURCES	14
SECTION 10 – INTERMOUNTAIN HOME DELIVERY PHARMACY AND HELP WITH RX COSTS	15
SECTION 11 – INTERMOUNTAIN HOME HEALTH VISIT	16
SECTION 12 – DISCLAIMERS	17

## We are here to help.

You've got questions, we've got answers. Call us toll-free at **855-442-9900 (TTY: 711)** or visit [selecthealth.org/medicare](https://selecthealth.org/medicare).

### Hours of operation:

October 1 to March 31 – Monday through Sunday, 8:00 a.m. to 8:00 p.m.

April 1 to September 30 – Weekdays, 8:00 a.m. to 8:00 p.m., closed weekends.

Outside of these hours of operation, please leave a message and your call will be returned within one business day.



## Contact list.

To get the answers you need, here is a list of our partner organizations and resources.

### Select Health

#### Member Services

**855-442-9900 (TTY: 711)**

This is our main number—use it for any health insurance question.

#### Member Advocates

**800-515-2220**

Call our advocates if you need help finding a doctor or scheduling an appointment.

### NationsBenefits

**833-878-0232**

[selecthealth.nationsbenefits.com](https://selecthealth.nationsbenefits.com)

NationsBenefits Advisors are available 8:00 a.m. to 8:00 p.m. to answer questions about your Select Health Medicare Flex Card, Grocery benefit, and Wellness Your Way + Over-the-Counter (OTC) benefits.

### Intermountain Home Delivery Pharmacy

**855-779-3960**

[intermountainrx.org](https://intermountainrx.org)

Get your prescriptions delivered right to your front door, with no additional cost to you.

### EyeMed

**844-872-8868**

If you have questions about EyeMed vision providers in your area or any other questions about your vision hardware coverage, please call EyeMed Vision Care Customer Service.

### TruHearing

**866-201-9695**

If you have questions about hearing aid providers in your area or any other questions about your hearing aid coverage, please call TruHearing.

## Your dental benefits.

Your plan includes **\$1,500** of preventive, basic, and major dental services at no additional cost.



BENEFIT	COST
Maximum plan payment benefit (includes preventive services)	<b>\$1,500</b>
Preventive dental services: Two exams, two cleanings, two bitewing x-rays every year, plus one panoramic x-ray every 36 months	<b>\$0 copay</b>
Basic dental services	<b>\$0 copay</b>
Major dental services (excluding implants)	<b>\$0 copay</b>



Don't forget to use in-network dentists to receive your care. If you need help finding a dentist, call our Member Advocates team at **800-515-2220 (TTY: 711)** or scan the QR code. Get started! Scan here to find a dentist.

## Your vision care and eyewear hardware benefits.

Good vision is an important part of overall health. As a Select Health Medicare member, you get a **\$200 allowance** to use on frames or contact lenses every year.

SELECT HEALTH MEDICARE VISION PLAN COVERAGE	
Routine eye exam	<b>\$0 at in-network providers</b>
Eyewear	<b>Up to \$200 allowance</b>

This benefit is administered by the EyeMed Vision Care network. You can choose from the right mix of independent, national retail and regional retail providers, including LensCrafters®, Target Optical<sup>SM</sup>, and Pearle Vision<sup>SM</sup>.

Plus, we offer online in-network options through **LensCrafters.com, Ray-Ban.com, Glasses.com, and ContactsDirect.com.**

Select Health will reimburse you \$35 for a routine eye exam when seeing an out-of-network eye care provider.



If you have questions about EyeMed Vision Care vision providers in your area or any other questions about your vision hardware coverage, please call EyeMed Vision Care at **844-872-8868 (TTY: 711)** or scan the QR code.

## Your hearing benefits.

You have a hearing aid benefit through TruHearing®. This benefit makes addressing hearing loss more affordable with two benefit tiers. We also cover diagnostic hearing and balance evaluations, as long as you visit an in-network provider, and the evaluation is done in an outpatient setting.



BENEFIT	COST
Routine hearing exam (one per year)	<b>\$0 copay</b>
Tier 1 Advanced	<b>\$699 per aid</b>
Tier 2 Premium	<b>\$999 per aid</b>

**Note:** Costs are per hearing aid. Hearing aid copays do not go towards the Member Out-of-Pocket Maximum.

### Your hearing aid purchase includes:

- Risk-free 60-day trial period
- 1 year of follow-up visits
- 80 free batteries per non-rechargeable hearing aid
- Full 3-year manufacturer warranty

Call TruHearing to get started. **866-201-9671 (TTY: 711)**



## Your Select Health Medicare Flex Card.

Select Health Medicare members receive all their wellness benefits in one easy-to-use *Benefits Mastercard® Prepaid Card* (Flex Card). You can use this card to pay for eligible items and services. Plus, we will add funds to your card when you complete certain Healthy Living activities.

Your card has different purses for different benefits, including:

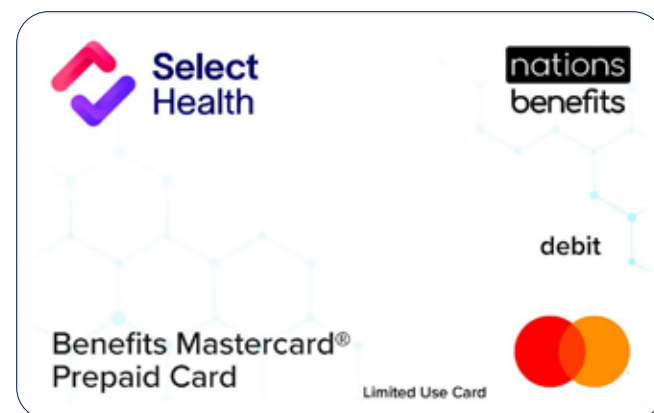
- **Wellness Your Way and Over-the-Counter (OTC)** allowance to spend on approved wellness activities like gym memberships, health education classes, golf green fees, ski lift passes, and over-the-counter items.
- **Healthy Living Rewards** for keeping up with wellness activities like annual routine physicals and preventive screenings.
- **Kroger Grocery** allowance to spend on healthy groceries purchased at Kroger affiliate stores.\*  
\*This benefit is only available for members with a confirmed qualifying chronic condition on Select Health Medicare + Kroger (HMO).
- **Kroger Boost** allowance to purchase a Boost grocery delivery membership.

### How to use your card.

To use your Flex Card at an approved retail location, simply swipe it when paying for approved items or wellness services. Select “credit” when prompted. Selecting “debit” will decline the transaction since there is no PIN. Your card uses the funds from the appropriate purse to pay for the items or services.

To order OTC items online, visit [selecthealth.nationsbenefits.com](https://selecthealth.nationsbenefits.com) or use the Benefits Pro app.

Visit [selecthealth.org/medicare/wellness/flexible-benefits-card](https://selecthealth.org/medicare/wellness/flexible-benefits-card) to learn more.



### Manage your Flex Card.

Visit [SelectHealth.NationsBenefits.com](https://SelectHealth.NationsBenefits.com) or download the **Benefits Pro app** to access your account.

Once logged in, you can easily:

- Activate or manage your Flex Card.
- Review your purse balances and expiration dates.
- Browse, order, and track eligible OTC products.
- Search for approved retail locations.
- Review transaction history.
- Request a reimbursement for out-of-pocket purchases for covered services or items.

### Need help with your Flex Card?

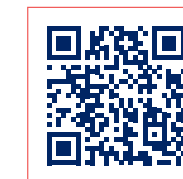
Call NationsBenefits at **833-878-0232 (TTY: 711)**.

NationsBenefits Member Experience Advisors are available 8:00 a.m. to 8:00 p.m. local time.



Scan the QR code to visit our website to learn more.

### BENEFITS PRO PORTAL AND BENEFITS PRO APP.



#### Benefits Pro Portal.

To place an order, scan the QR code using your smartphone camera or visit: [SelectHealth.NationsBenefits.com](https://SelectHealth.NationsBenefits.com)



#### Benefits Pro App.

To place an order, scan the QR code using your smartphone camera or search “**Benefits Pro**” in the App Store or Google Play.



## Wellness Your Way + Over-the-Counter (OTC) benefit.

**You get \$300 a year to pay for wellness activities and services and OTC products.**

As a Select Health Medicare member, you can use your Flex Card to pay for wellness activities and services, as well as over-the-counter products. These benefits are a combined purse in your Flex Card account, with a yearly allowance that you choose how to spend. Dollar amounts do not roll over into the next plan year, so make sure you use your yearly allowance by **December 31**.

### Wellness Your Way.

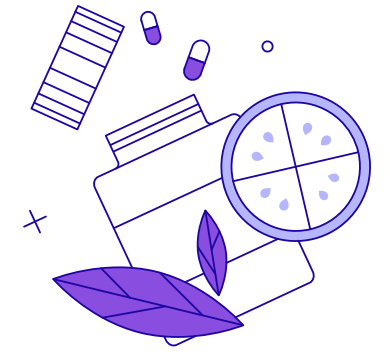
**Find a wellness activity or service** to help you live a healthier life.

**Use your Flex Card** to pay for approved activities or services.

#### What kind of wellness activities can you choose?

- Approved weight management programs: Jenny Craig, Weight Watchers, Noom, etc.
- Fitness center memberships: Silver&Fit Flex\*, city or county gym and recreations centers, sports and athletic clubs, yoga and pilates studios, etc.  
\*Members must register for this program through Silver&Fit.
- Golf green fees and bucket of balls at the driving range.

- League fees: Bowling, Tennis, Pickleball, Hockey, etc.
- Health education classes: Managing chronic conditions, cooking classes, and nutritional virtual counseling services like Season Health.
- Home safety devices or assessments
- Fitness classes: Pilates, yoga, martial arts, cycling, water aerobics, weight training, etc.
- Memory fitness subscriptions: BrainHQ, Headspace, Lumosity, Happify, etc.
- Ski lift passes
- Sport equipment rentals: Bicycle (non-electric), paddleboard, kayak, golf clubs. Unique requests outside of this list will not be approved.
- Virtual fitness subscriptions: Peloton, iFit, NordicTrack, Zwift, Vivo, etc.



#### Not sure if an activity is covered? Give Select Health a call.

Our team can clarify whether an activity is approved and walk you through the reimbursement process, if needed.

Some activities, services, and items are not covered, such as:

- Fitness equipment, apparel, or accessories purchased for personal or home-use
- Purchase of meals or supplements
- Club membership fees
- Alternative or holistic education services
- National or State Park passes
- Hunting or fishing licenses
- Camp site fees

### Over-the-Counter (OTC) benefit.

**Use your Flex Card when checking out** at an approved retail location. Simply swipe your card for payment and select “credit” when prompted. Selecting “debit” will decline the transaction since there is no PIN.

**Order online** by visiting [selecthealth.nationsbenefits.com](https://selecthealth.nationsbenefits.com) or by using the Benefits Pro app.

#### What kind of OTC items can you buy?

- Pain relievers
- Vitamins and minerals (e.g., fish oil, calcium, multivitamins)
- Bandages and antibiotic ointment
- Toothbrushes, toothpaste, and dental floss
- Cough drops
- Cottons swabs
- Antacids
- Lotion
- Eye drops
- First aid supplies...and more!

**Order by phone or mail** by contacting NationsBenefits at **833-878-0232 (TTY: 711)**. Order forms and catalogs should be mailed back no later than the 20th of December to ensure that the order total is applied to the current benefit period.

Mail completed forms to:

NationsBenefits  
1700 N. University Drive  
Plantation, FL 33322



Visit [selecthealth.org/medicare/wellness](https://selecthealth.org/medicare/wellness) or scan the QR code to learn more about these benefits.

## Healthy Living Rewards.

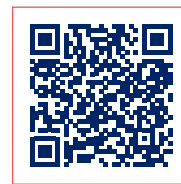
Living a healthy lifestyle has never been more rewarding. When you complete wellness activities, like getting your annual physical, money is automatically added to your Healthy Rewards purse that you can spend on fitness equipment, wellness services, home essentials, dining experiences, and more.

Log in to your **NationsBenefits** portal to review your Healthy Rewards purse balance.

**Remember, rewards do not carry over to the next year.** It's recommended that you complete your reward activities by **October 1, 2025**, so you can spend your rewards dollars by **December 31, 2025**.

**Note:** Alcohol, ammunition, firearms, gift cards, prescriptions, and tobacco are not eligible.

Scan the QR code or visit [selecthealth.org/medicare/wellness/healthy-living](https://selecthealth.org/medicare/wellness/healthy-living) to learn more.



## 2025 Healthy Living Wellness Activities

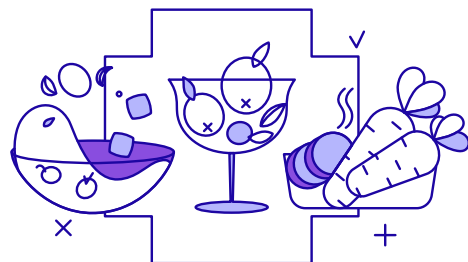
ANNUAL ACTIVITIES		REWARD
<b>Annual routine physical.</b>	The annual routine physical is a service designed to help you and your Primary Care Provider (PCP) maintain your health, identify care you may need, and manage any chronic conditions you may have.	<b>\$100</b>
<b>RECOMMENDED BREAST CANCER SCREENINGS</b>		
<i>Only members in the recommended age bracket can receive rewards for completing these screenings.</i>		
<b>Mammogram.</b>	If you are a female between the ages of 52 and 74, it's recommended that you receive a mammogram every one to two years.	<b>\$40</b>
<b>RECOMMENDED COLORECTAL CANCER SCREENINGS</b>		
<i>Only members in the recommended age bracket can receive rewards for completing these screenings.</i>		
<b>HIGH REWARD</b>		
This test is more successful at detecting early signs of colorectal cancer.		
<b>Colonoscopy.</b>	If you are between the ages of 45 and 75, it's recommended you receive a colonoscopy at least once every 10 years (every 2 years for high-risk individuals). Colonoscopy screenings can identify and remove precancerous colon polyps.	<b>\$100</b>
<b>LOW REWARD</b>		
These tests, while helpful, are not as effective as a colonoscopy in detecting early signs of colorectal cancer.		
<b>Fecal Immunochemical Test (FIT), Fecal Occult Blood Test (FOBT), or CT Colonography.</b>	If you are between the ages of 45 and 75 and have not received a colonoscopy, it's recommended you complete a FIT, FOBT, or CT Colonography once a year to test for early signs of cancer.	<b>\$20</b>

**Note:** If you complete a reward activity, but are not within the recommended age limit, you will not be eligible for the reward.

**Excess rewards do not roll over to a new plan year. Rewards are applied to your Flex Card Healthy Rewards balance after Select Health receives confirmation reporting, which can take 4–6 weeks after activity completion.**



# Kroger Grocery Benefit.



You get \$60 every month to use towards the purchase of healthy groceries.

Select Health Medicare + Kroger plan members with a qualifying chronic health condition receive a monthly allowance loaded to their Flex Card to use for purchasing healthy groceries from Kroger stores.

These funds can be used to purchase healthy groceries including:

- **Fresh fruit:** apples, bananas, grapes, oranges.
- **Vegetables:** broccoli, carrots, spinach, bell peppers.
- **Breads and whole grains:** whole wheat bread, brown rice, quinoa, pasta.

- **Proteins:** chicken breast, ground turkey, eggs, canned beans.
- **Dairy:** milk, yogurt, cheese.
- **Snacks:** nuts, granola bars, popcorn.
- **Pantry essentials:** olive oil, pasta sauce, spices.
- **Beverages:** herbal tea, coffee, fruit juice.

Note: Items such as alcohol, tobacco, and non-food items are not covered.



## Frequently Asked Questions.

**Q: Where can I use my grocery benefit?**

**A:** You can use your grocery benefit at Kroger grocery stores across the country, including:

- Smith's
- Fred Meyer
- King Soopers
- City Market...and more

To find an approved retail location near you, visit [selecthealth.nationsbenefits.com](https://selecthealth.nationsbenefits.com), through the Benefit Pro app, or by calling NationsBenefits at 833-878-0232 (TTY: 711).

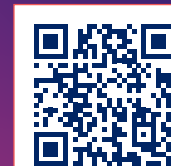
**Q: How do I use my funds to pay for groceries?**

**A:** To pay for groceries, simply swipe your card at the register of any approved retailer and select "credit" (there is no PIN). Your card can't be used to buy groceries online (except through Nations) or at the pharmacy counter.

**Q: How long do my grocery funds last?**

**A:** Grocery benefit funds do not roll over, so you have until the end of the month to use them. New funds will be deposited the first day of the next month.

View and manage your Healthy Grocery purse balance by:



- Calling NationsBenefits at 833 878-0232 (TTY: 711)
- Logging in to the **Benefits Pro** app.
- Logging in to your Benefit Pro Portal online at [selecthealth.nationsbenefits.com](https://selecthealth.nationsbenefits.com).

**Q: What if I don't have a qualifying chronic health condition to unlock the grocery benefit?**

**A:** If you do not have a confirmed qualifying chronic condition, you will not receive the Kroger Grocery benefit.

**Q: How can I learn more about the grocery benefit and qualifying chronic health conditions?**

**A:** Scan the QR code or visit [selecthealth.org/medicare/ssbci](https://selecthealth.org/medicare/ssbci) to learn how to unlock the grocery benefit, what qualifying conditions are eligible, how to manage your Flex Card, and more.



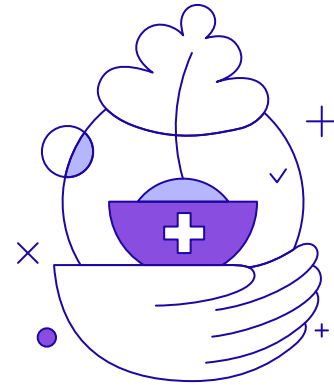
**Q: What is the Kroger Boost purse?**

**A:** Select Health Medicare + Kroger plan members get a standard Boost membership at no cost. Select Health will load the funds into the Kroger Boost purse on your Flex Card for you to purchase the yearly Boost membership, either online or in-store.

*Limit one membership per household. Funds cannot be redeemed for anything other than a \$59 standard Boost membership. Non-transferable.*

## Care management resources.

We have several programs designed to meet your unique needs. Your health and wellness are our priority, that's why we want you to have resources to help you maintain and enjoy a healthy lifestyle.



### Help Managing Your Care.

Our care team works together to help you manage your health conditions. We can help you manage specific conditions such as diabetes, cancer, or mental health concerns. We also can help find resources that you may need to manage your health better such as help finding transportation to appointments or connecting you with resources in your community.

### Transitional Care.

If you have a hospitalization or other inpatient facility stay, our care team can help coordinate the care you may need at home. We can help:

- Answer any questions you may have about your care plan
- Coordinate any durable medical equipment (DME) needs, like oxygen tanks or a wheelchair
- Review your medications to make sure they are working for you
- Fill out advance care planning documents
- Coordinate 14 days of meals (2 per day) after you are discharged from an inpatient hospital or skilled nursing facility stay

### Meals after a hospital stay.

Your plan covers up to 2 meals per day for up to 14 days after you are discharged from an inpatient hospital or skilled nursing facility stay, based on need, at no cost to you. Prior authorization and coordination of delivery is required through a Care Manager.

If you have a hospital or inpatient facility stay and want to learn more about Care Management, call **800-442-5305 (TTY:711)**.

### Advance Directives.

Advance directives are documents that allow you to make your wishes about end-of-life care known ahead of time, including who you want to make healthcare decisions for you, should you ever become unable to speak for yourself.

It is important to understand the options available to you for advance directives and your rights under state law. Select Health and our network of hospitals and providers are required to comply with state law and cannot refuse care or otherwise discriminate against you based on whether or not you have a properly executed advance directive.

If you don't have advance directives on file, this information will be provided to you upon request.

For more information about advance directives, please call Intermountain Health at **800-442-4845 (TTY: 711)**.

## Help with prescription drug costs.

If you're not filling your medications because of the cost, we encourage you to talk to your doctor, pharmacist, or Select Health. There may be cheaper alternatives and Extra Help available.



### Kroger Pharmacies.

To maximize the benefits of your Select Health Medicare + Kroger (HMO) plan, fill your prescriptions at Kroger pharmacies such as Smith's, King Soopers, and City Market. You will enjoy a reduced copay compared to other retail pharmacies.

### Intermountain Home Delivery Pharmacy.

Home delivery is a convenient way to get the maintenance medications you take every day for a lower copay. It saves you time, money, and trips to the pharmacy by providing 90-day medication supplies with no-cost shipping. Visit [intermountainrx.org](http://intermountainrx.org) to enroll online or for more information.

### Rx Savings Solutions.

Rx Savings Solutions® is an easy-to-use, comprehensive online prescription tool that shows you ways to spend less money on your prescriptions. It will automatically alert you if you are paying too much for your medication and identify other ways to get the same treatment for less money.

Log in to your Select Health member account at [selecthealth.org/rxsavings](http://selecthealth.org/rxsavings) to enroll and start saving.

### My Advocate.

Select Health has partnered with My Advocate, a service that can help you apply for Medicare Savings Programs. They help people save on their Part B Premiums and prescription drug costs.

To learn more about how My Advocate can help you, call **844-794-2296**.

### Medicare Extra Help.

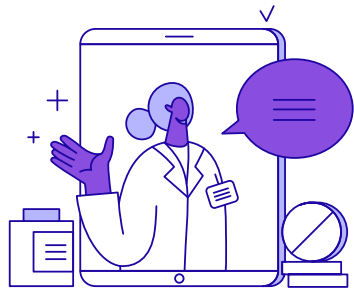
Medicare may be able to help you pay for your medications. If your yearly income and resources are below certain financial limits, you may qualify for Extra Help.

To see if you qualify, call:

- **800-MEDICARE (800-633-2048)**, 24 hours a day, 7 days a week. TTY users, please call **877-486-2048**. You can also visit [medicare.gov](http://medicare.gov) or "Programs for People with Limited Income and Resources" in your Medicare and You handbook.
- Your local Social Security office
- Your local state Medicaid office
- Select Health has additional resources to help you with prescription drug costs.

For help, call us at **855-442-9900 option 2 (TTY: 711)**.





## Intermountain Home Health Visits.

### Home visits to help you live your healthiest life possible.

Complete your introductory health assessment with Intermountain Health House Calls for Select Health Medicare members.

This service is free and convenient for Select Health Medicare members and is done from your home. It helps your care team get to know you and understand your needs. Plus, you'll earn rewards for completing the visit.

### How visits work.

- Intermountain Health House Calls will contact you to schedule an appointment.
- A nurse practitioner or physician assistant will visit with you in your home or virtually.
- Topics covered during your visit:
  - An overview of your medical history and prescription medications.
  - Completion of a health risk assessment.
  - Conversations about your overall well-being.
  - Information about local resources and support.
- The Intermountain Health House Calls team will share all medical notes from the visit with your elected doctor.

**NOTE:** The Intermountain Health House Calls visit will not replace your PCP or your annual wellness visit.

### Questions?

Contact Intermountain Health House Calls at **385-622-0669 (TTY: 711)** on weekdays from 8:00 a.m. to 4:30 p.m. MST.



### Disclaimers.

Select Health is an HMO, PPO, SNP plan sponsor with a Medicare contract. Enrollment in Select Health Medicare depends on contract renewal.

The benefits mentioned are part of a special supplemental program for chronically ill enrollees. Eligible chronic conditions include diabetes, hypertension, musculoskeletal disorders, lung disorders, and cancer, as well as other conditions not listed. Eligibility for the benefits is not based solely on your condition and all eligibility requirements must be met before the benefits are provided. For details, please contact us.

Select Health obeys federal civil rights laws. We do not treat you differently because of your race, color, ethnic background or where you come from, age, disability, sex, religion, creed, language, social class, sexual orientation, gender identity or expression, and/or veteran status.

This information is available for free in other languages and alternate formats by contacting Select Health Medicare: **855-442-9900 (TTY: 711) / Select Health: 800-538-5038.**

ATENCIÓN: Si habla español, tiene a su disposición servicios gratuitos de asistencia lingüística.

注意: 如果您使用繁體中文, 您可以免費獲得語言援助服務。請致電

The Benefits Mastercard® Prepaid Card is issued by The Bancorp Bank N.A., Member FDIC, pursuant to license by Mastercard International Incorporated and card can be used for eligible expenses wherever Mastercard is accepted. Mastercard and the circles design is a trademark of Mastercard International Incorporated.

Valid only in the U.S. No cash access.



**Your feedback is important to us!**

Medicare members are sometimes asked to share their experience about their health plan. If you receive a survey, phone call, or other outreach about your Select Health Medicare plan, please take a moment to share your insight so we can improve. You can also contact us at [talktous@selecthealth.org](mailto:talktous@selecthealth.org).



**Select Health**

P.O. Box 30196  
Salt Lake City, UT 84130

IMPORTANT SELECT HEALTH  
MEDICARE INFORMATION

Nonprofit  
Organization  
US Postage  
PAID  
Salt Lake City, UT  
Permit No. 4547

# Select Health Medicare Additional Benefits Member Guide

## Select Health Medicare + Kroger (HMO) 022

**Discover how you can maximize your benefits.**

**Learn about your Select Health Medicare Flex Card, dental coverage, hearing aid coverage, and other benefits available to you as a Select Health Medicare member.**

