



Select
Health

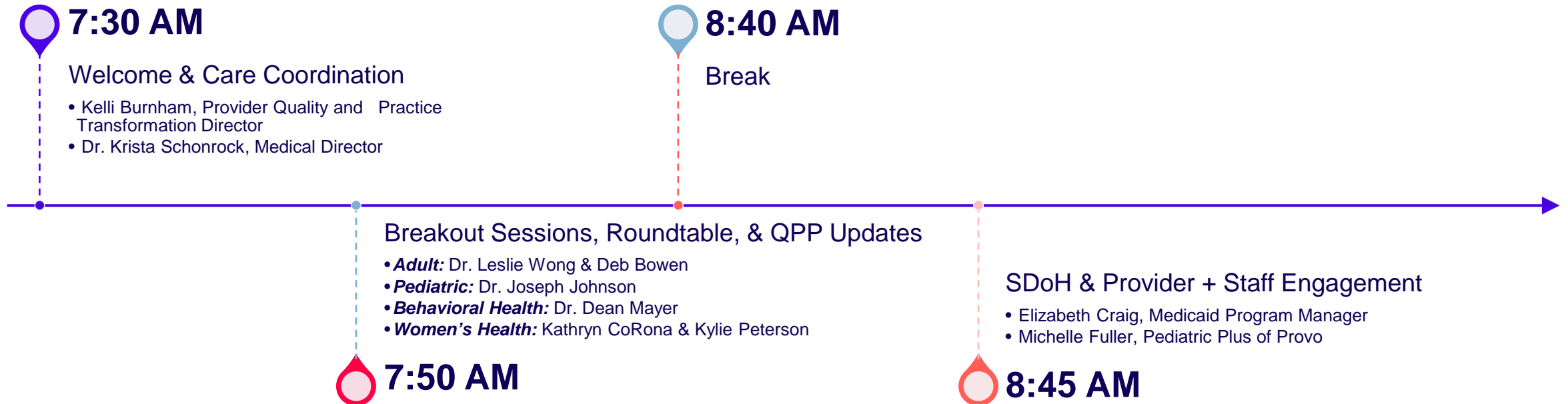
QPP Fall 2023 Fall Best Practice Conference

Select Health | Quality Provider Program
September 27, 2023

Quality Provider Performance Team

Agenda

September 27, 2023, 7:30 AM to 9:30AM



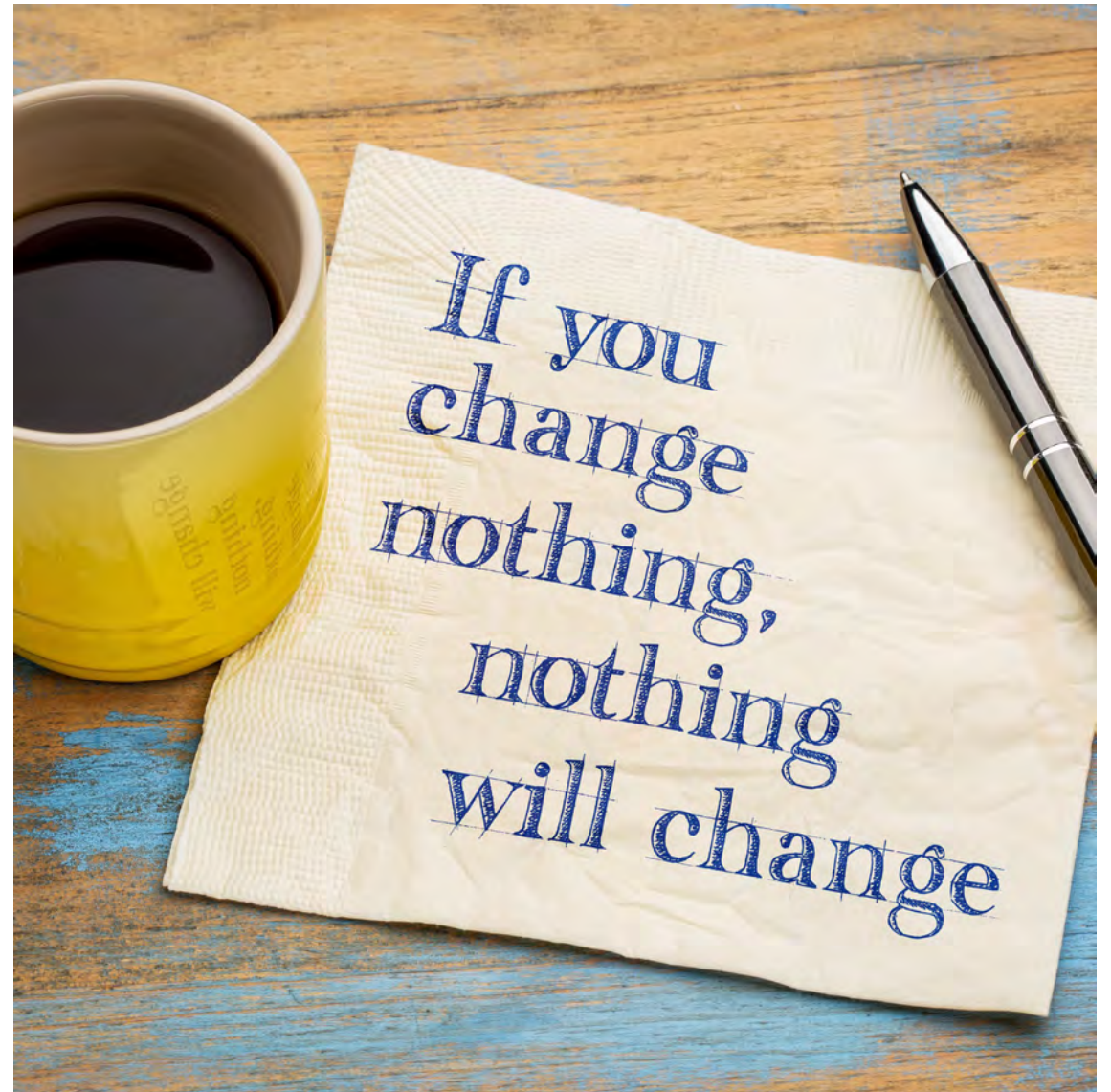
Welcome!



Change, Grow, Expand

We are always looking to improve and touch more lives.

- New way to earn for quality work completed
- New programs
- New markets
- Number of clinics doubled
- Size of the QPP team doubled





Select
Health

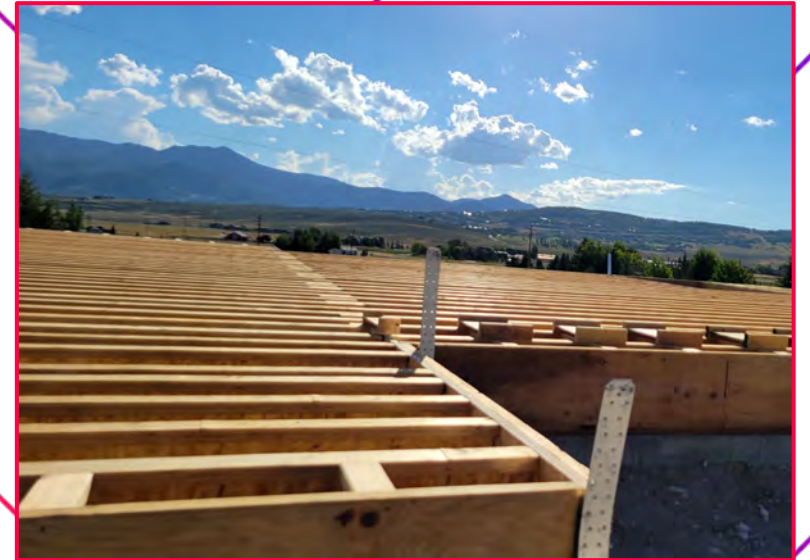
Care Coordination: The “Why”

Select Health | Fall 2023 Best Practice Conference
September 27, 2023

Krista Schonrock, MD, MMM, FACP
Senior Medical Director and AVP, Select Health

Why your work matters

How long would it take to build a house alone?



Why your work matters

How about when it gets rough?



Why your work matters

Why not use a team?



Why your work matters

Team-based vs individual approach

Where do we want to be in 6 months? 6 years?

INDIVIDUAL

We do not want to shovel snow again this winter (we don't want to repeat what didn't work or was unpleasant).

TEAM

Because we are all under one roof:

- Each part of the team has an opportunity to share their skills.
- As a team, we can ensure a much quicker and more definitive result.

Why your work matters

Team-based vs individual approach

RESILIENCE

INDIVIDUAL

- Provider and patient feel isolated.
- There is less overall satisfaction.
- The support team feels marginalized.

TEAM

- Provider and patient know they have support.
- All team members feel more satisfaction.

Why your work matters- QPP outcomes

Team-Based vs Individual Approach

Team-based — improved outcomes

1.37 times more adolescent and child well visits

1.56 times more patients with diabetes with controlled A1c.

410,081 care gaps closed (as of August 31, 2023), resulting in 8.3% improvement in the population health over 2022.

Deliveries are 3 times less likely to be associated with a neonatal abstinence syndrome (NAS)

QPP reports data as of 9/12/2023

Why your work matters — QPP outcomes

Team-based vs individual approach

Team-based — increased revenue

Programs	Average Earnings	Average Potential Earnings
Primary Care	\$56,392	\$106,332
Behavioral Health	\$3,841	\$6,300
Women's Health	\$41,615	\$103,763

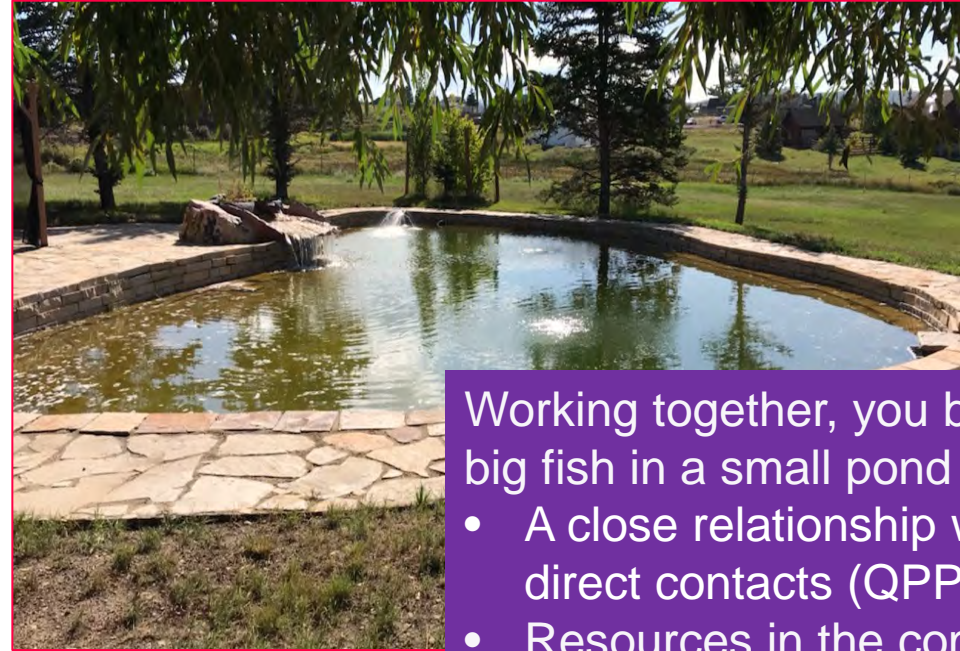
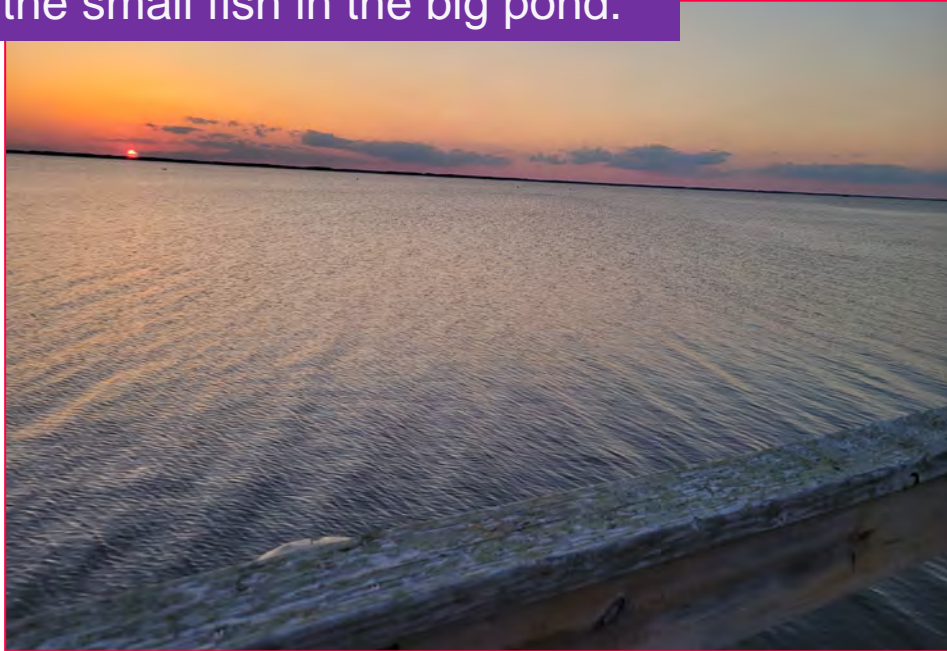
QPP reports data as of 9/12/2023

Why your work matters

Team-based vs individual approach

What about your relationship with payers and community providers?

You are the small fish in the big pond.



Working together, you become a big fish in a small pond through:

- A close relationship with direct contacts (QPP team)
- Resources in the community through payer sources

Why your work matters



Thank you!

